

PLUMBING GENERAL NOTES

- THE CONTRACTOR SHALL FURNISH AND INSTALL ALL MATERIAL AND EQUIPMENT IN STRICT ACCORDANCE WITH THE 2018 NC PLUMBING CODE AND ALL STATE AND LOCAL CODES, STANDARDS, AND PER MANUFACTURER'S DIRECTIONS.
- ALL PLUMBING FIXTURES AND PLUMBING SYSTEM EQUIPMENT SHALL BE PROVIDED COMPLETE WITH ALL ACCESSORIES, HANGERS, VALVES, STOPS, TAILPIECES, TRAPS, FAUCETS, STRAINERS, ETC. SEE FIXTURE SCHEDULE.
- FURNISH AND INSTALL COMPLETE SYSTEMS OF SOIL, WASTE, VENT, HOT AND COLD WATER PIPING FROM ALL PLUMBING FIXTURES, AND/OR OTHER EQUIPMENT.
- CLEANOUT PLUGS SHALL BE INSTALLED IN ACCORDANCE WITH PLUMBING CODE REQUIREMENTS. PROVIDE CLEANOUTS AT THE BASE OF ALL WASTE STACKS, AT EVERY FOUR 45 DEGREE TURNS, AND AT EVERY 100 FEET. CLEANOUTS SHALL BE PLACED IN READILY ACCESSIBLE LOCATIONS.
- ALL SOIL, WASTE, AND VENT LINES SHALL BE CONCEALED IN THE BUILDING CONSTRUCTION.
- COPPER PIPING SHALL BE PROTECTED AGAINST CONTACT WITH MASONRY OR DISSIMILAR METALS. ALL HANGERS, SUPPORTS, ANCHORS, AND CLIPS SHALL BE COPPER OR COPPER PLATED. WHERE COPPER PIPING IS CARRIED ON IRON TRAPEZE HANGERS WITH OTHER PIPING, SATISFACTORY AND PERMANENT ELECTROLYTIC ISOLATION MATERIAL SHALL PROTECT THE COPPER AGAINST CONTACT WITH OTHER METALS.
- WHERE COPPER PIPING IS SLEEVED THROUGH MASONRY, SLEEVES SHALL BE COPPER OR RED BRASS. WHERE COPPER MUST BE CONCEALED IN A MASONRY PARTITION OR AGAINST MASONRY, CONTACT SHALL BE PREVENTED BY COATING THE COPPER HEAVILY WITH ASPHALTIC ENAMEL AND PROVIDING 15# ASPHALT SATURATED FELT BETWEEN THE PIPE AND MASONRY.
- THE PLUMBING CONTRACTOR SHALL COORDINATE CLOSELY WITH THE MECHANICAL AND THE ELECTRICAL CONTRACTORS TO AVOID CONFLICT WITH OTHER TRADES.
- CEILING AREA HAS LIMITED SPACE. CONTRACTOR MUST COORDINATE WITH OTHER TRADES FOR ALL STRUCTURES, PIPING, CONDUIT, DUCTWORK, LIGHTING, ETC. TO PROPERLY BE INSTALLED.
- ALL PIPE INSULATION SHALL RUN CONTINUOUSLY THROUGH FLOORS, WALLS, AND PARTITIONS.
- PROVIDE DRAIN VALVES IN THE HOT AND COLD WATER SYSTEM AT ALL LOW POINTS TO ALLOW FOR COMPLETE DRAINAGE. PROVIDE SHUT-OFF VALVES AT THE BASE OF ALL STACKS.
- PROVIDE BALL VALVES IN ALL BRANCH LINES OF THE HOT AND COLD WATER DISTRIBUTION SYSTEM ON 3/4" AND LARGER CN & HW AND AS SHOWN ON PLANS, RISERS, AND SCHEMATIC DETAILS. PROVIDE SHUT OFF VALVES ON THE FIXTURE SUPPLY TO EACH PLUMBING FIXTURE, APPLIANCE, OR MECHANICAL EQUIPMENT.
- VACUUM BREAKERS SHALL BE PROVIDED FOR ALL FIXTURES TO WHICH HOSES MAY BE ATTACHED. VACUUM BREAKERS SHALL BE PERMANENTLY ATTACHED.
- WASTE AND VENT PIPING SHALL BE AS FOLLOWS:
BELOW SLAB: PVC PIPE, PVC SOCKET FITTINGS, AND SOLVENT-CEMENTED FITTINGS.
ABOVE SLAB: PVC PIPE, PVC SOCKET FITTINGS, AND SOLVENT-CEMENTED FITTINGS.
- STORM PIPING SHALL BE AS FOLLOWS:
BELOW SLAB: PVC PIPE, PVC SOCKET FITTINGS, AND SOLVENT-CEMENTED FITTINGS.
ABOVE GROUND: SERVICE WEIGHT NO-HUB CAST IRON PIPING.
INSULATION IS REQUIRED ON ALL ROOF DRAIN BODIES AND PIPING (ABOVE SLAB). 1/2" THICK RIGID MOLDED FIBERGLASS WITH FITTINGS INSERTS, PVC COVERS, AND VAPOR BARRIER JACKET.
- DOMESTIC WATER PIPING ABOVE SLAB SHALL BE TYPE 'L' COPPER. DOMESTIC WATER PIPING BELOW SLAB SHALL BE TYPE 'K' COPPER. INSULATION IS REQUIRED ON ALL WATER SUPPLY PIPING ABOVE FINISHED FLOOR. INSULATION TO HAVE A MINIMUM R FACTOR OF 6.5 OR PER LOCAL JURISDICTION.
- EXPOSED LAVATORY DRAINS AND HOT WATER LINES MUST BE INSULATED AND COVERED PER ADA REQUIREMENTS.
- ALL PLUMBING VENT LOCATIONS TO BE VERIFIED WITH ARCHITECT BEFORE INSTALLATION.
- ALL PLUMBING LINES REQUIRED TO BE JETTED PRIOR TO TURNOVER.
- PIPING SHOULD BE COORDINATED WITH ALL STRUCTURAL FOOTINGS AND FOUNDATIONS. PIPE SHOULD BE OFFSET TO AVOID CONTACT WITH FOOTINGS AND FOUNDATION WALLS. IF PIPING MUST RUN UNDERNEATH A FOOTING OR THROUGH A FOUNDATION WALL, THE PIPE MUST BE INSTALLED WITH A RELIEVING ARCH OR IN A PIPE SLEEVE.
- INVERT ELEVATIONS SHALL BE ESTABLISHED AND VERIFIED BEFORE WASTE PIPING IS INSTALLED SO THAT PROPER SLOPES WILL BE MAINTAINED.
- THE PLUMBING CONTRACTOR SHALL PROVIDE WATER HAMMER PROTECTION ON ALL WATER DISTRIBUTION PIPING. INSTALLATION OF AIR CHAMBERS OR SHOCK ARRESTORS SHALL BE IN ACCORDANCE WITH PDI-WH201. SEE SHOCK ARRESTOR SCHEDULE (IF PROVIDED).
- REFER TO ARCHITECTURAL DRAWINGS FOR MOUNTING HEIGHTS OF PLUMBING FIXTURES.
- PROVIDE ACCESS DOORS FOR ALL VALVES AND DEVICES REQUIRING ACCESS WHEN LOCATED IN WALLS OR ABOVE INACCESSIBLE CEILING CONSTRUCTION. ACCESS DOORS TO BE RATED WHERE INSTALLED IN RATED ASSEMBLIES.
- PROVIDE DEEP SEAL TRAPS FOR ALL FLOOR DRAINS.
- PROVIDE A U.L. LISTED ASSEMBLY FOR ALL PENETRATIONS THRU FIRE RATED WALLS AND FLOORS.
- PROVIDE PRESSURE REDUCING VALVE IF PRESSURE EXCEEDS 80 PSI.
- INSULATE ALL PIPING IN RECIRCULATION SYSTEM PER THE ENERGY CODE (USE R-2 INSULATION).
- NO INSULATION PERMITTED ON BACKFLOW PREVENTOR ASSEMBLY.
- COORDINATE ALL WORK WITH KITCHEN PLANS AND SPECIFICATIONS.

PLUMBING LEGEND

	DOMESTIC COLD WATER PIPING
	DOMESTIC COLD WATER PIPING (UNDRSLAB)
	DOMESTIC HOT WATER PIPING
	DOMESTIC 110°F HOT WATER PIPING
	DOMESTIC 140°F HOT WATER PIPING
	DOMESTIC 140°F HOT WATER RETURN
	VENT PIPING
	WASTE (SANITARY SEWER)
	WASTE (GREASE)
	GAS PIPING
	EXISTING PIPING
	BALL VALVE
	INLINE BFP(WATTS SD-3 OR EQUAL)
	BALANCING VALVE
	PIPE UP
	PIPE DOWN
	FLOOR DRAIN
	FLOOR SINK
	CONNECT TO EXISTING
	FIRE SPRINKLER RISER
	POINT OF USE MIXING VALVE, WATTS USG OR EQUAL
AAV	AIR ADMITTANCE VALVE
ABV	ABOVE
AFF	ABOVE FINISHED FLOOR
BV	BALANCING VALVE
CW	COLD WATER
DN	DOWN
E.C.	ELECTRICAL SUB-CONTRACTOR
FCO	FLOOR CLEAN OUT
FD	FLOOR DRAIN
FR	FROM
FS	FLOOR SINK
G.C.	GENERAL CONTRACTOR
HB	HOSE BIBB
HD	HUB DRAIN
HW	HOT WATER
M.C.	MECHANICAL SUB-CONTRACTOR
P.C.	PLUMBING SUB-CONTRACTOR
SD	STORM DRAINAGE
V	VENT
W	WASTE

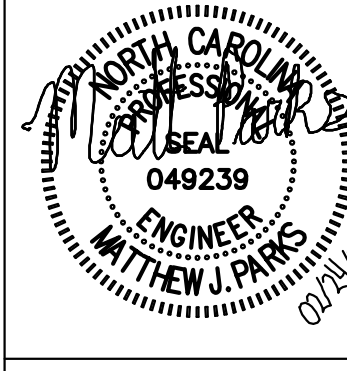
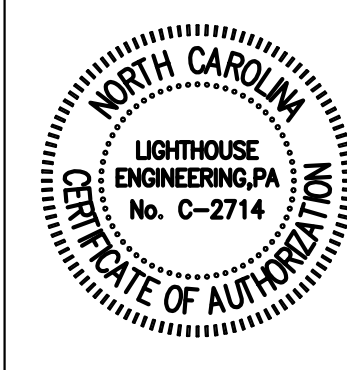
PLUMBING FIXTURE SPECIFICATIONS AND CONNECTION SCHEDULE

MARK	FIXTURE	TYPE	MANUFACTURER	MODEL NO.	MATERIAL	STYLE	FAUCET/VALVE			DRAIN		SUPPLIES AND STOPS	PIPE SIZES			MOUNTING	REMARKS		
							MANUFACT. MODEL NO.	SPOUT	HANDLES	CENTERS	TYPE		SIZE	WASTE	VENT			CW	HW
P-1	WATER CLOSET	FLUSH VALVE	AMERICAN STANDARD	2234.015	VITREOUS CHINA	STANDARD ELONGATED	SLOAN ROYAL III	-	-	-	-	-	3"	2"	1 1/2"	-	FLOOR	PROVIDE WITH OPEN FRONT SEAT WITH NO LID	
P-1A	WATER CLOSET	FLUSH VALVE	AMERICAN STANDARD	3043.102	VITREOUS CHINA	ADA ELONGATED	SLOAN ROYAL III	-	-	-	-	-	3"	2"	1 1/2"	-	FLOOR	PROVIDE WITH OPEN FRONT SEAT WITH NO LID	
P-2	LAVATORY	WALL HUNG	AMERICAN STANDARD	9024904EC.020	VITREOUS CHINA	ADA COMPLIANT	DELTA 2507-HDF	CENTERSET	SINGLE LEVER	4"	GRID	1 1/2"	McGUIRE 175	2"	1 1/2"	1 1/2"	1 1/2"	WALL HUNG	MOUNT AT ADA HEIGHT METERING FAUCET
P-3	URINAL	FLUSH VALVE	AMERICAN STANDARD	6541.132	VITREOUS CHINA	ADA ELONGATED	SLOAN ROYAL 186-1-ADA	-	-	-	-	-	3"	1 1/2"	3/4"	-	WALL	MOUNT AT REQUIRED ADA HEIGHT	
P-4	MOP SINK	FLOOR MOUNTED	FIAT	MSB-2424	MOLDED STRUCTURAL PLASTIC	ONE PIECE 24" X 24"	FIAT 830-AA	THREADED	TWO HANDLES	8"	-	-	3"	1 1/2"	3/4"	3/4"	FLOOR	PROVIDE MOP HANGER, HOSE, HOSE BRACKET, AND VACUUM BREAKER.	
P-5	WAIT STATION SINK	SINGLE COMP'T	DAYTON	DI25214	STAINLESS STEEL	6 1/2" DEEP 4-HOLE	CFG 47513B	8" SWING	SINGLE LEVER	8"	CRUMB CUP	1 1/2"	McGUIRE 165	1 1/2"	1 1/2"	1 1/2"	1 1/2"	COUNTER TOP	PROVIDE WITH ELKAY LK-35
WH-1	WATER HEATER	GAS	STATE	SDV 100 199NE	GLASS LINED	POWER DIRECT VENT	-	-	-	-	-	-	-	-	1 1/2"	1 1/2"	FLOOR	100 GAL. STORAGE, GAS FIRED 20% GPM REC AT 100°F RISE 199 MBH INPUT	
RP-1	RECIRC PUMP	-	BELL & GOSSETT	SERIES PR	CAST IRON	-	-	-	-	-	-	-	-	-	-	-	-	1/6 HP, 115V, 1Ø	
FD	FLOOR DRAIN	SQUARE TOP	J.R. SMITH	2010	CAST IRON	NIKALOY TOP	-	-	-	-	-	-	-	-	-	-	FLOOR	PROVIDE WITH TRAP PRIMER CONNECTION WHEN HB IS NOT SHOWN ON PLANS.	
FS	FLOOR SINK	SQUARE TOP	J.R. SMITH	3150 WITH HALF GRATE	CAST IRON	NIKALOY TOP	-	-	-	-	-	-	-	-	-	-	FLOOR	ACID RESISTING ENAMEL INTERIOR DOME BOTTOM STRAINER FLASHING CLAMP	
WCO	WALL CLEAN-OUT	ROUND COVER	J.R. SMITH	4472	CAST IRON	S.S. COVER	-	-	-	-	-	-	-	-	-	-	WALL		
FCO	FLOOR CLEAN-OUT	SQUARE TOP	J.R. SMITH	4040	CAST IRON	NICKEL BRONZE TOP	-	-	-	-	-	-	-	-	-	-	FLOOR		

NOTES:
1. CATALOG NUMBERS AND MANUFACTURERS ARE TO INDICATE TYPE AND QUALITY OF FIXTURE DESIRED. SUBMIT CUTSHEETS OF THESE AND ALTERNATE MANUFACTURERS FOR ARCHITECT AND OWNER APPROVAL PRIOR TO PURCHASE OF ANY FIXTURES. INFORMATION ON ALTERNATE FIXTURES PROPOSED BY THE CONTRACTOR SHALL INCLUDE THE ADD/DEDUCT ASSOCIATED WITH ACCEPTANCE OF THAT FIXTURE (OR THE ALTERNATE PACKAGE AS A WHOLE).

Drawing Sheet List

#	Title
P001	Plumbing Legend, Notes, and Schedules
P002	Plumbing Details
P101	Plumbing Waste Plan - 1st Floor
P102	Plumbing Waste Plan - 2nd Floor
P103	Plumbing Sanitary and Vent Riser
P201	Plumbing Domestic Water Plan - 1st Floor
P202	Plumbing Domestic Water Plan - 2nd Floor
P203	Plumbing Domestic Water Riser



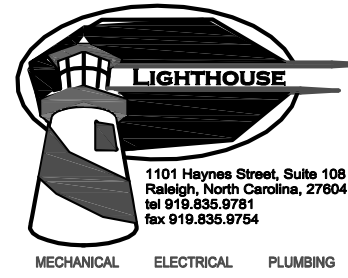
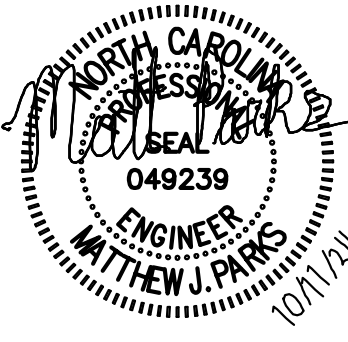
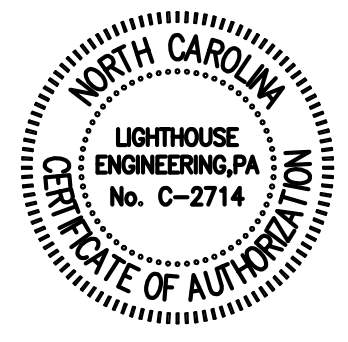
mon(arc) studio
701 W Trinity Ave #117
Durham, NC 27701

for permit 10/11/24
ifc 02/21/2025

Hutchins Showroom
a restaurant upfit
408 W Geer St.
Durham, NC 27701

Plumbing Legend, Notes, and Schedules

P001



mon(arc) studio

701 W Trinity Ave #117
Durham, NC 27701

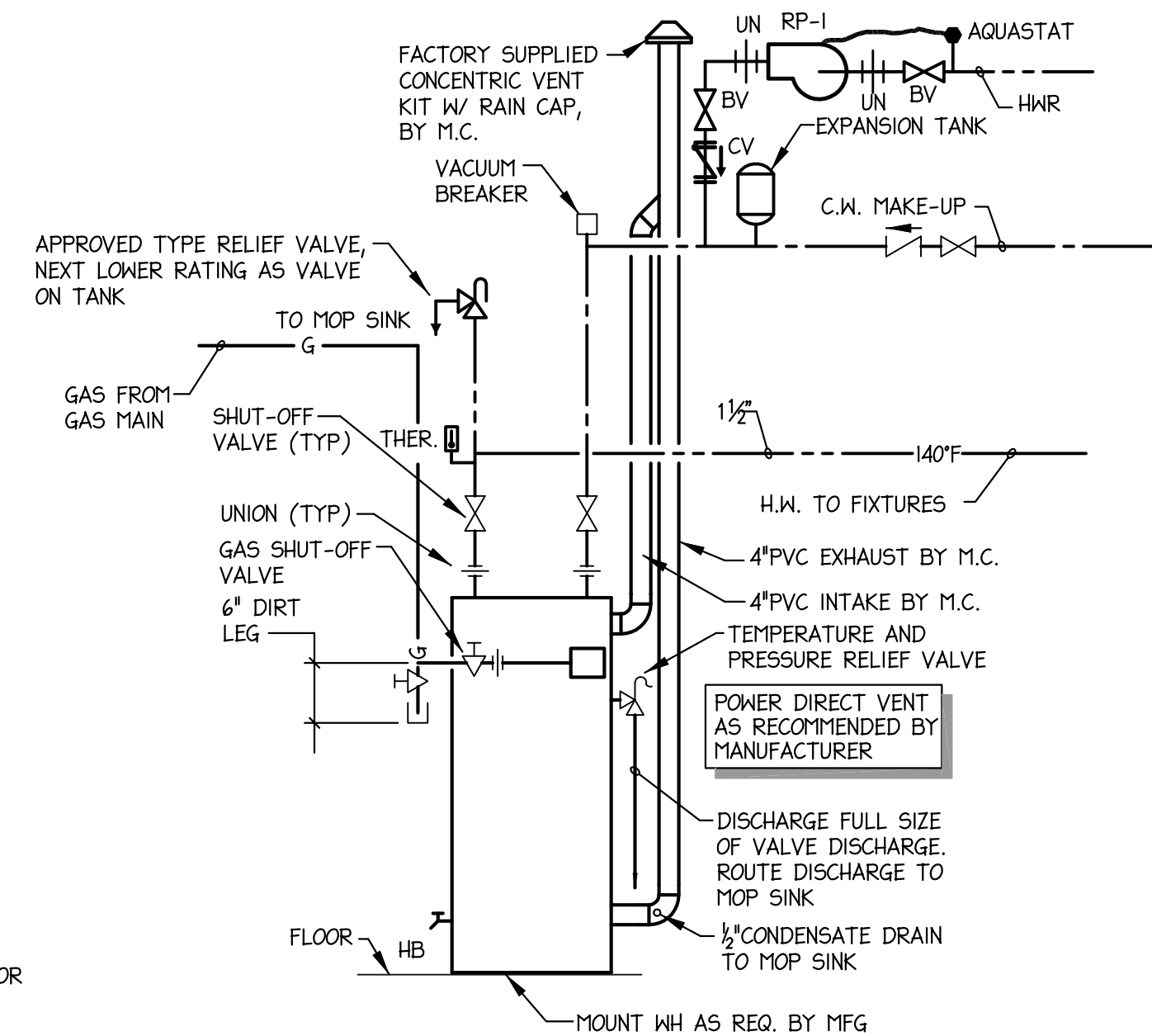
for permit 10/11/24

Hutchins Showroom
a restaurant upfit
408 W Geer St.
Durham, NC 27701

Plumbing Details

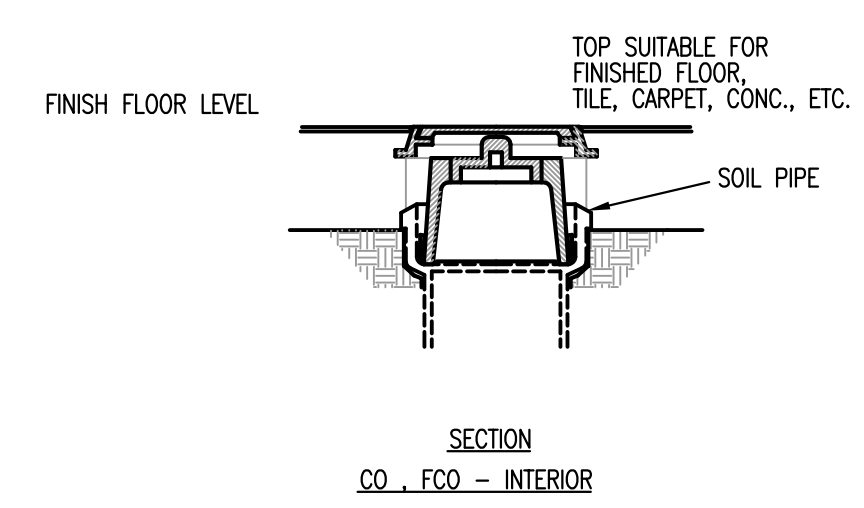
P002

Storage Tank Water Heater Sizing Calculator						
Developed by the Plan Review Unit of the Environmental Health Section NC Division of Public Health						
Establishment Name:	Hutchins Showroom (restaurant upfit)					
Address:	408 W Geer St, Durham, NC 27701					
EQUIPMENT	Description	Number of compartments	(Inches)		GPH CALCULATED	
			Length	Width	Depth	
Manual warewashing sink	3 COMP SINK	3	18	24	14	59
	Sink #2	1 COMP SINK	17	17	12	11
	Sink #3					0
	Bar sink					0
Sinks are calculated at 75% capacity					Total	70
Enter type of prep sink and number of sink compartments for each sink	Type of prep sink (vegetable, meat, seafood)	Number of compartments			Gallons Per Hour (GPH)	
Prep sink #1	DELVGENERAL	1			5	
Prep sink #2	DELVGENERAL	1			5	
Prep sink #3					0	
Prep sinks are calculated at 5 gallons per compartment					Total	10
Enter the quantity of equipment	Quantity				Gallons Per Hour (GPH)	
Handwashing sinks	7				35	
Service sink	2				10	
Hose reel					0	
Clothes washer					0	
Enter a description and estimated gallon per hour (GPH) usage for other equipment	Description	Estimated gallons per hour (GPH) usage			Gallons Per Hour (GPH)	
Other equipment					0	
Other equipment					0	
Other equipment					0	
Handwashing sinks and service sinks are calculated at 5 GPH each. Hose reels are calculated at 5 GPH, clothes washers at 15 GPH, other equipment at the usage entered.					Total	45
Enter make, model, and Final Rinse Usage gallons per hour (GPH) or the warewashing machine	Make	Model	Final Rinse Usage (GPH) Found in "Warewashing Machine Specs" tab below or on manufacturer's spec sheet	Gallons Per Hour (GPH)		
Warewashing machine	NOBLE	HT-180 495NOHT	56	39.2		
Enter the quantity of pre-rinse units	Quantity				Gallons Per Hour (GPH)	
Pre-rinse					0	
Warewashing machines are calculated at 70% of the final rinse usage specified by the manufacturer. Pre-rinses are calculated at 45 GPH.					Total	39.2
Recovery Rate Needed (GPH):					165	
Water Heater Input (BTU or kW) Needed:						
Gas Water Heater			Electric Water Heater			
126 ,000 BTU at 70°F rise			28 kW at 70°F rise			
144 ,000 BTU at 80°F rise			32 kW at 80°F rise			
162 ,000 BTU at 90°F rise			36 kW at 90°F rise			
180 ,000 BTU at 100°F rise			40 kW at 100°F rise			

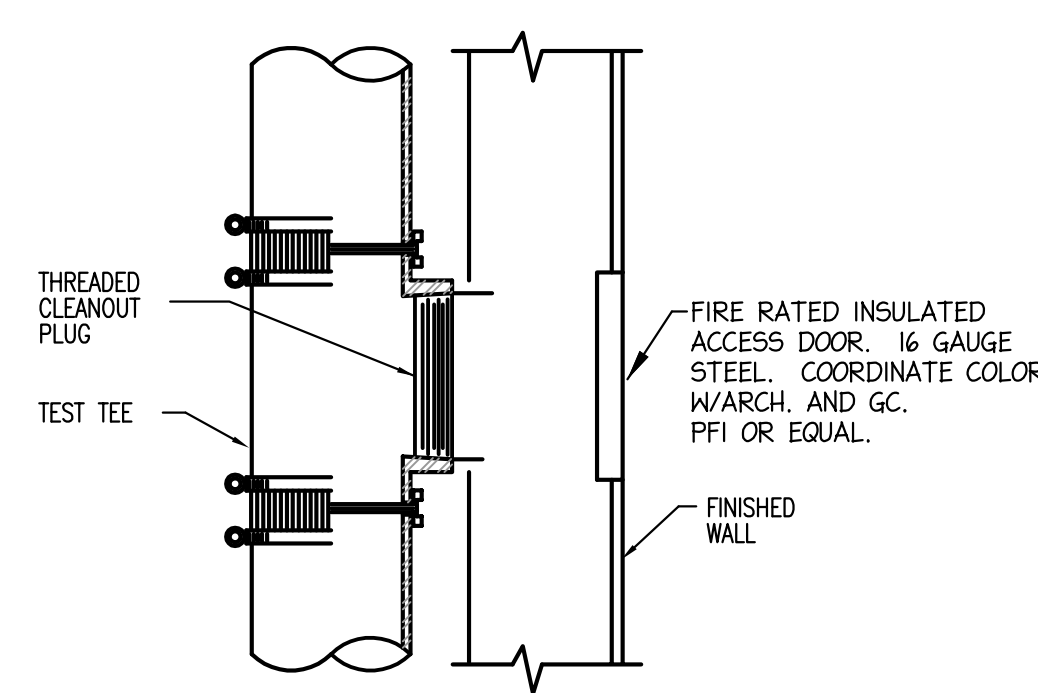


5 WATER HEATER DETAIL
NO SCALE

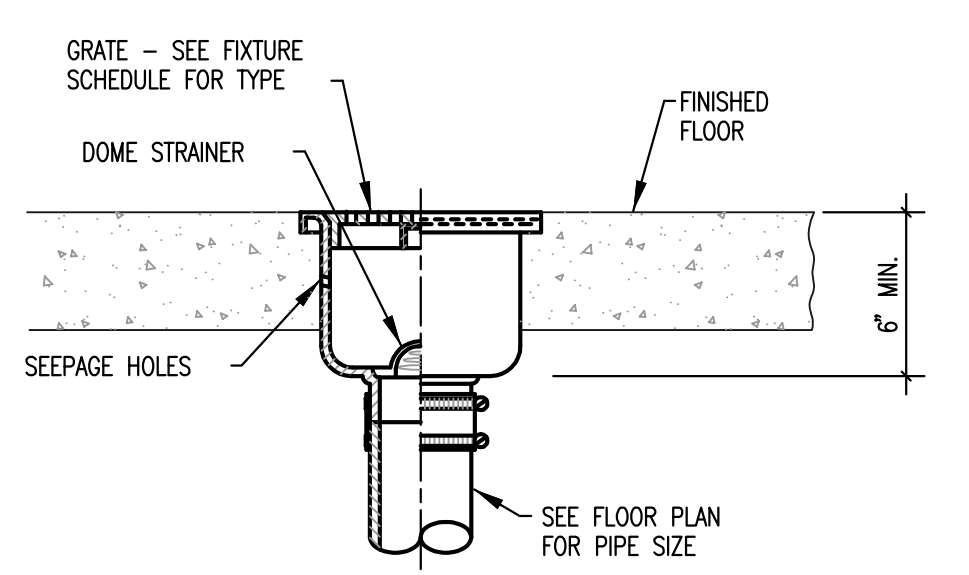
NOTE:
1. INSTALL H.W. HEATER AND MIXING VALVE PER MANUFACTURER REQUIREMENTS.
2. PROVIDE HEAT TRAP ON CW AND HW LINES PER ENERGY CODE.
3. PROVIDE TIMER TO ALLOW RECIRC PUMP TO TURN OFF DURING UNOCCUPIED TIMES.



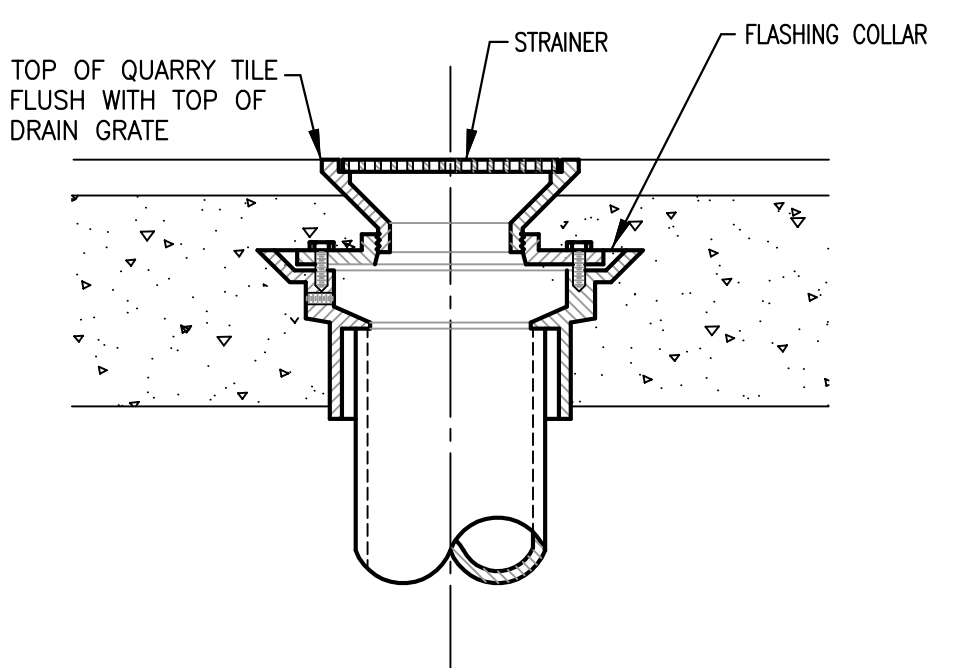
4 INTERIOR CLEANOUT DETAIL
NO SCALE



3 WALL CLEANOUT DETAIL
NO SCALE (WCO)



2 FLOOR SINK DETAIL
NO SCALE

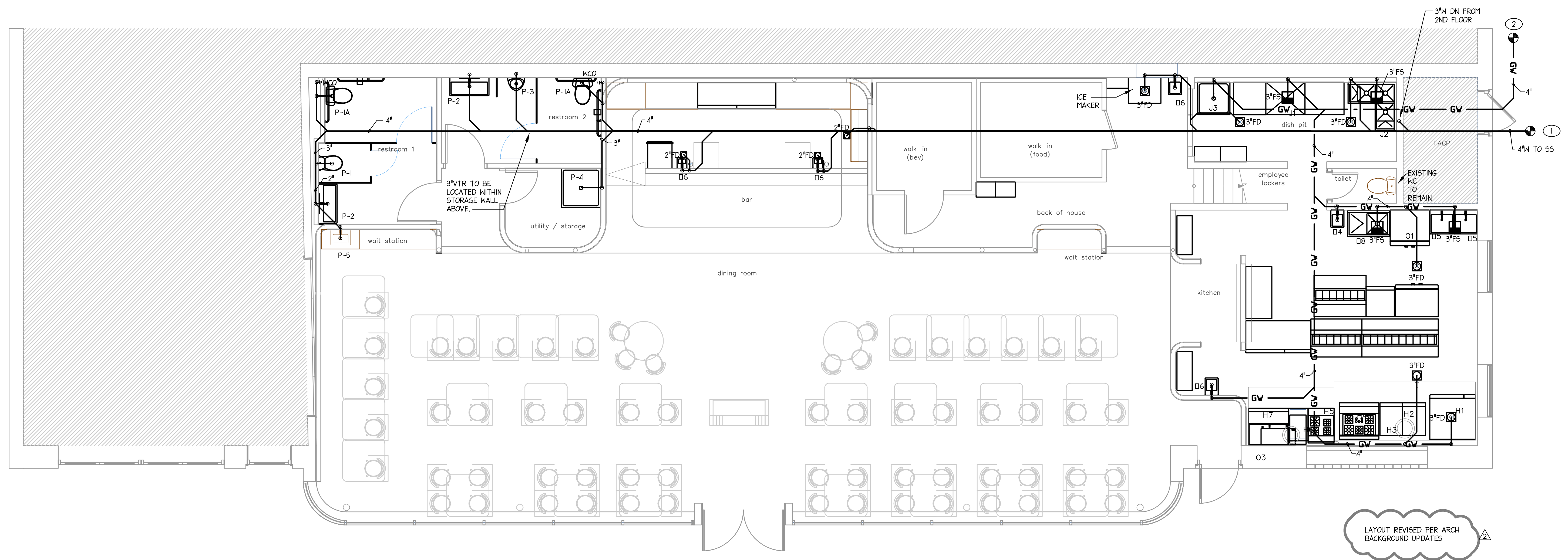


1 FLOOR DRAIN DETAIL
NO SCALE

EQUIPMENT SCHEDULE											
ITEM	EQUIPMENT DESCRIPTION	CW (in)	HW (in)	AFF (in)	DIRECT DRAIN (in)	AFF (in)	INDIRECT AIR GAP	GAS (in)	AFF (in)	MBTUH	REMARKS
H1	COMBI OVEN	0.75					3"FD	0.5		107	
H2	FRYER							0.5		150	
H3	FRYER							0.5		150	
H4	BURNER							0.5		132	bar service
H5	RANGE							0.5		150	
H6	CHARBROILER							0.5		40	
H7	FLAT TOP							0.5		90	
J1	DISH MACHINE		0.75				3"FS				NOBLE WAREWASHING HT-180. PROVIDE WITH DRAIN WATER TEMPERING KIT
J2	3 COMPARTMENT SINK	0.75	0.75				3"FS				
J3	MDP SINK 30"x30"	0.75	0.75		3'						
D3	SALAMANDER							0.5		36	
D4	SINGLE BAY SINK (1) (39"x30")	0.75	0.75				3"FS				
D5	SINGLE BAY SINK (2) (30"x24")	0.75	0.75				3"FS				
D6	HAND SINKS (3) (12"x16")	0.5	0.5		2'						
D8	DNE COMPARTMENT SINK (17"x17"x12")	0.5	0.5				3"FS				

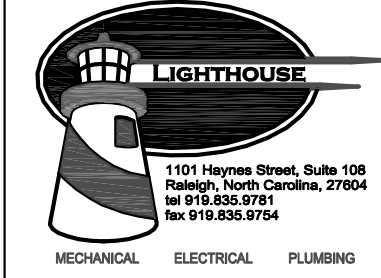
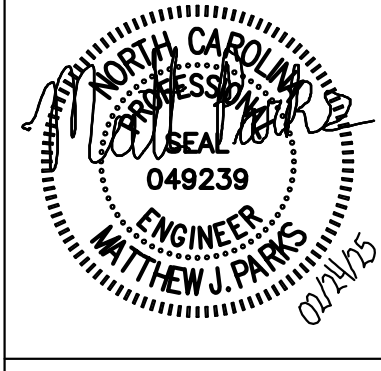
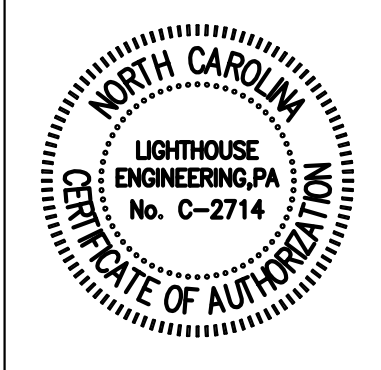
TAGGED NOTES

- CONFIRM EXISTING SANITARY SEWER CONNECTION LOCATION AND INVERT ELEVATION BEFORE INSTALLATION.
- 4"GW TO EXISTING GREASEY WASTE CLEANOUT AND 2000 GAL GREASE INTERCEPTOR



1 1ST FLOOR PLAN
1/4" = 1'-0"

LAYOUT REVISED PER ARCH BACKGROUND UPDATES



mon(arc) studio
701 W Trinity Ave #117
Durham, NC 27701

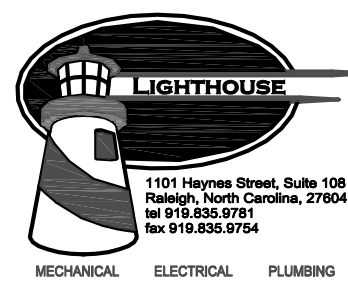
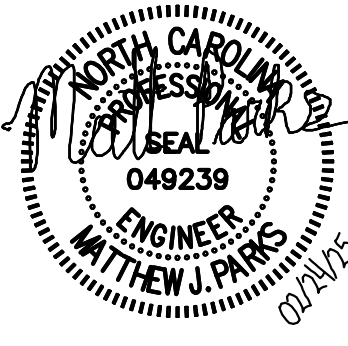
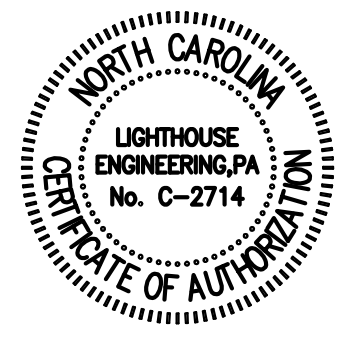
for permit 10/11/24

Hutchins Showroom
a restaurant upfit
408 W Geer St.
Durham, NC 27701

Plumbing Waste
Plan - 1st Floor

P101

2/15/24 P101 Plumbing Waste Plan - 1st Floor.dwg
Rev: 24, 2025 - 11:05am



mon(arc) studio

701 W Trinity Ave #117
Durham, NC 27701

for permit 10/11/24

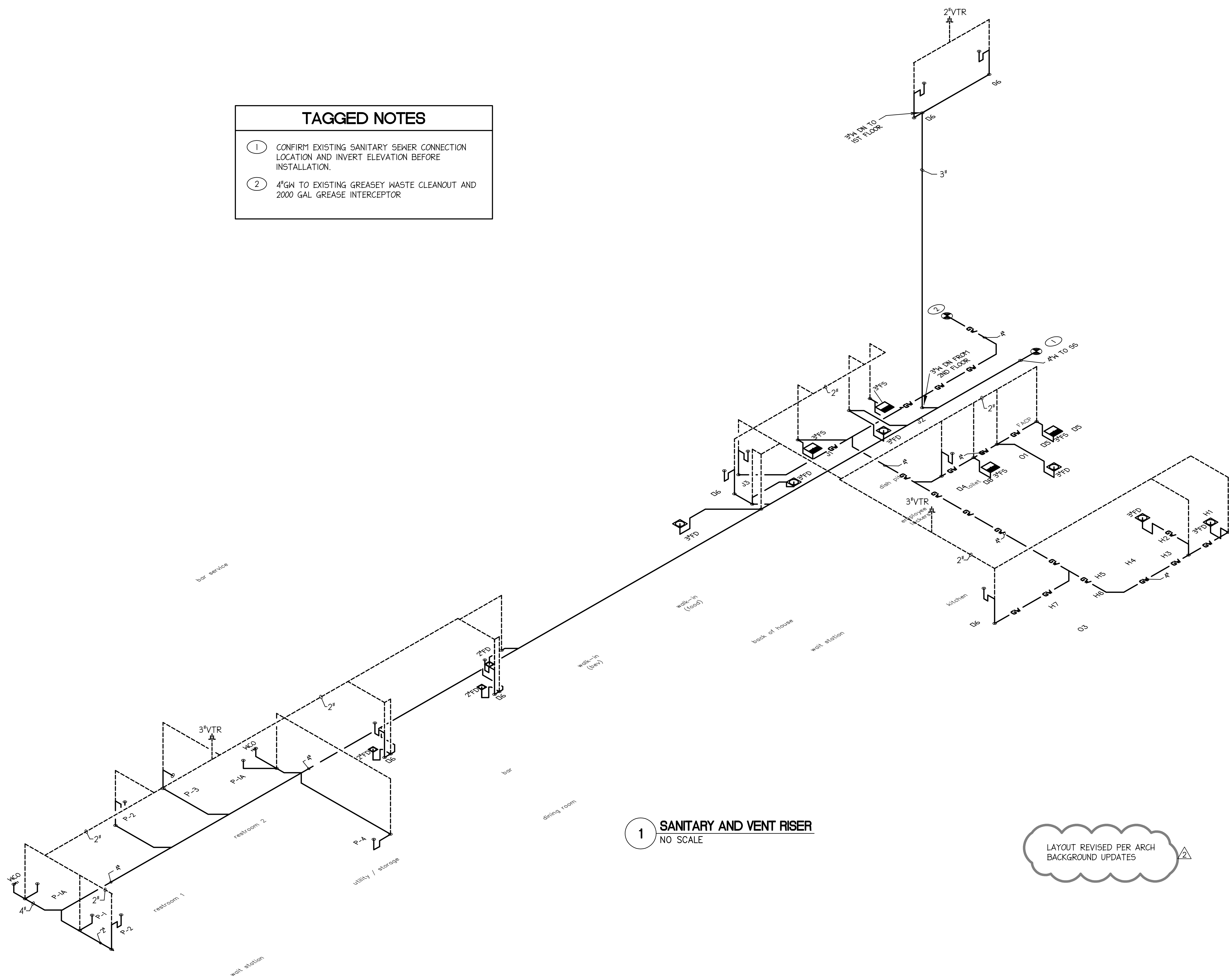
ifc 02/21/2025

Hutchins Showroom
a restaurant upfit
408 W Geer St.
Durham, NC 27701

Plumbing Waste
and Vent Riser

P103

TAGGED NOTES	
1	CONFIRM EXISTING SANITARY SEWER CONNECTION LOCATION AND INVERT ELEVATION BEFORE INSTALLATION.
2	4"GM TO EXISTING GREASEY WASTE CLEANOUT AND 2000 GAL. GREASE INTERCEPTOR

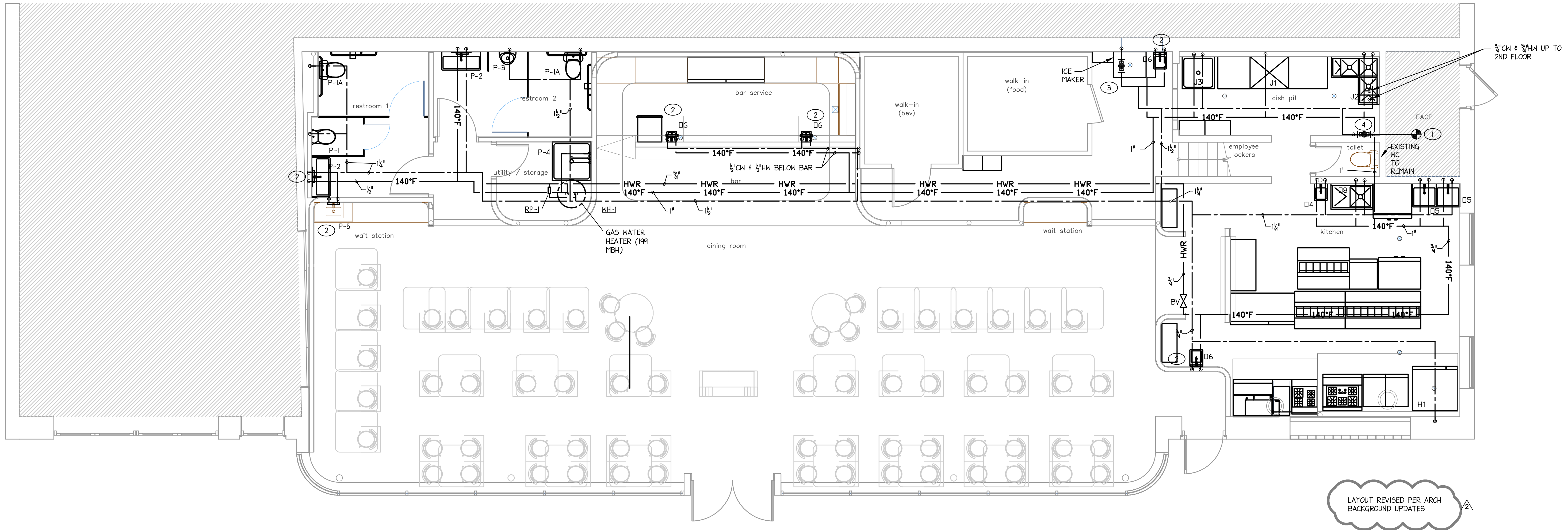


1 **SANITARY AND VENT RISER**
NO SCALE

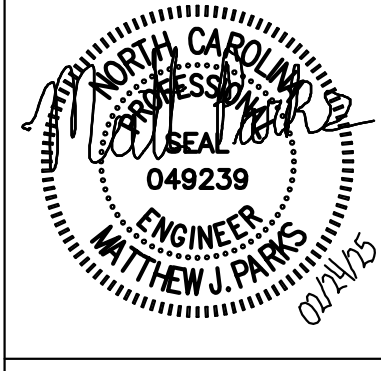
LAYOUT REVISED PER ARCH
BACKGROUND UPDATES

EQUIPMENT SCHEDULE											
ITEM	EQUIPMENT DESCRIPTION	CW (in)	HW (in)	AFF (in)	DIRECT DRAIN (in)	AFF (in)	INDIRECT AIR GAP	GAS (in)	AFF (in)	MBTUH	REMARKS
H1	COMBI OVEN	0.75					3"FD	0.5		107	
H2	FRYER							0.5		150	
H3	FRYER							0.5		150	
H4	BURNER							0.5		132	
H5	RANGE							0.5		150	
H6	CHARBROILER							0.5		40	
H7	FLAT TOP							0.5		90	
J1	DISH MACHINE		0.75				3"FS				NOBLE WAREWASHING HT-180. PROVIDE WITH DRAIN WATER TEMPERING KIT
J2	3 COMPARTMENT SINK	0.75	0.75				3"FS				
J3	MDP SINK 30"x30"	0.75	0.75		3'						
D3	SALAMANDER							0.5		36	
D4	SINGLE BAY SINK (1) (39"x30")	0.75	0.75				3"FS				
D5	SINGLE BAY SINK (2) (30"x24")	0.75	0.75				3"FS				
D6	HAND SINKS (3) (12"x16")	0.5	0.5		2'						
D8	DNE COMPARTMENT SINK (17"x17"x12")	0.5	0.5				3"FS				

- TAGGED NOTES**
- CONNECT TO EXISTING 1-1/2" DOMESTIC WATER LINE AFTER BACKFLOW PREVENTER.
 - ALL FIXTURES WHICH REQUIRE 110°F WATER TO BE INSTALLED WITH MATTS USG SERIES MIXING VALVE, TYPICAL.
 - P.C. TO PROVIDE CW LINES FROM FILTER TO EQUIPMENT. EACH PIECE OF EQUIPMENT AFTER FILTER TO HAVE MATTS SD-3 MF BFP ON SUPPLY LINE.
 - PROVIDE WATER MAIN SHUTOFF VALVE IN ACCESSIBLE LOCATION.



1 1ST FLOOR PLAN
1/4" = 1'-0"



mon(arc) studio
701 W Trinity Ave #117
Durham, NC 27701

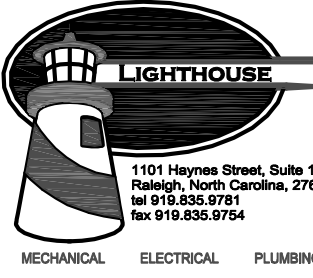
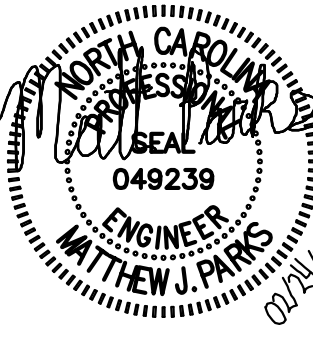
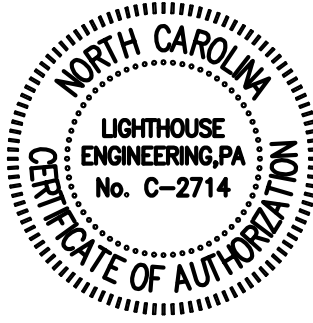
for permit 10/11/24
ifc 02/21/2025

Hutchins Showroom
a restaurant upfit
408 W Geer St.
Durham, NC 27701

Plumbing
Domestic Water Plan -
1st Floor

P201

2/15/2025 Plumbing Domestic Water Plan - 1st Floor.dwg
Rev: 24, 2025 - 11:00am



mon(arc) studio

701 W Trinity Ave #117
Durham, NC 27701

for permit 10/11/24

ifc 02/21/2025

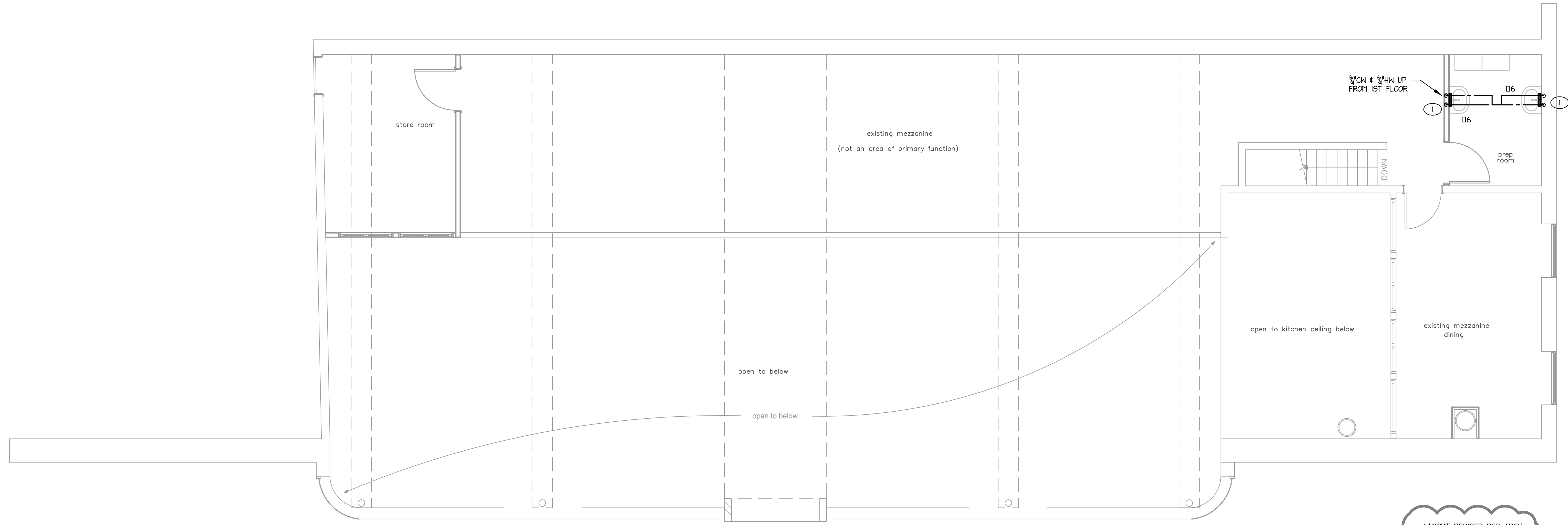
Hutchins Showroom
a restaurant upfit
408 W Geer St.
Durham, NC 27701

Plumbing
Domestic Water Plan -
2nd Floor

P202

TAGGED NOTES

① ALL FIXTURES WHICH REQUIRE 110°F WATER TO BE INSTALLED WITH WATTS USG SERIES MIXING VALVE, TYPICAL.

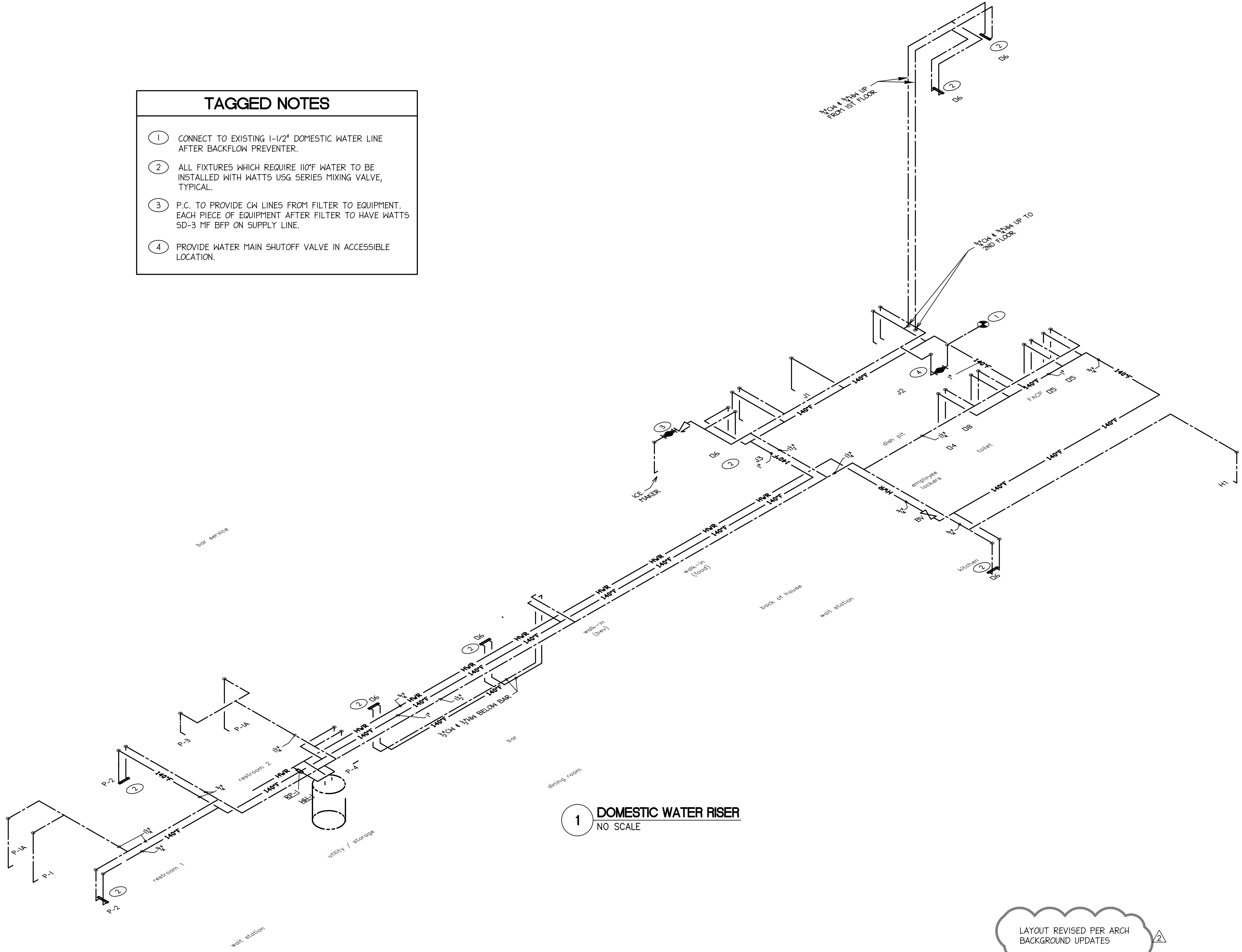


LAYOUT REVISED PER ARCH
BACKGROUND UPDATES

① **2ND FLOOR PLAN**
1/4" = 1'-0"

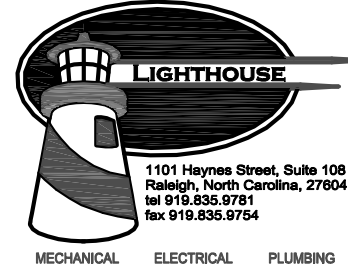
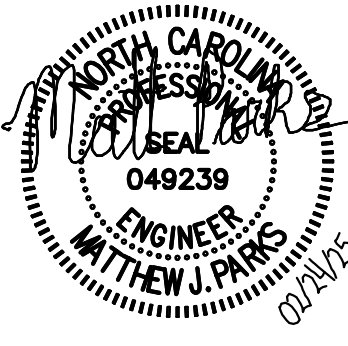
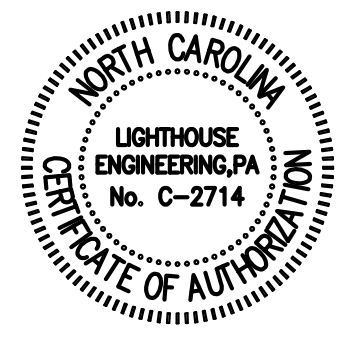
TAGGED NOTES

- ① CONNECT TO EXISTING 1-1/2" DOMESTIC WATER LINE AFTER BACKFLOW PREVENTER.
- ② ALL FIXTURES WHICH REQUIRE 110°F WATER TO BE INSTALLED WITH WATTS USG SERIES MIXING VALVE, TYPICAL.
- ③ P.C. TO PROVIDE CW LINES FROM FILTER TO EQUIPMENT. EACH PIECE OF EQUIPMENT AFTER FILTER TO HAVE WATTS SD-3 MF BFP ON SUPPLY LINE.
- ④ PROVIDE WATER MAIN SHUTOFF VALVE IN ACCESSIBLE LOCATION.



1 DOMESTIC WATER RISER
NO SCALE

LAYOUT REVISED PER ARCH
BACKGROUND UPDATES



mon(arc) studio
701 W Trinity Ave #117
Durham, NC 27701

for permit 10/11/24
ifc 02/21/2025

Hutchins Showroom
a restaurant upfit
408 W Geer St.
Durham, NC 27701

Plumbing
Domestic Water Riser

P203

Z:\101102024\Arch\Arch\Domestic Water Riser.dwg
File: 24_2025 - 11.dwg