

GENERAL ELECTRICAL NOTES

- ALL ELECTRICAL WORK SHALL BE IN ACCORDANCE WITH THE 2020 EDITION OF THE NATIONAL ELECTRICAL CODE AND ALL LOCAL AND STATE CODES.
- ALL MATERIAL, DEVICES, APPLIANCES, AND EQUIPMENT SHALL BE NEW AND SHALL CONFORM TO THE STANDARDS OF THE UNDERWRITER'S LABORATORIES, INC., AND THE NATIONAL ELECTRICAL MANUFACTURERS ASSOCIATION.
- ALL ELECTRICAL PERMITS AND INSPECTION FEES SHALL BE OBTAINED AND PAID FOR BY THE ELECTRICAL CONTRACTOR. DRAWINGS ARE DIAGRAMMATIC ONLY AND INDICATE ONLY THE GENERAL ARRANGEMENT. SEE ARCHITECTURAL DRAWINGS FOR EXACT DIMENSIONS.
- ELECTRICAL CONTRACTOR SHALL GUARANTEE ALL WORK AND MATERIALS FOR ONE YEAR EFFECTIVE THE DAY THE PROJECT IS ACCEPTED BY THE OWNER.
- ELECTRICAL CONTRACTOR SHALL MAKE ALL ELECTRICAL POWER CONNECTIONS TO HVAC, PLUMBING AND OTHER EQUIPMENT AS REQUIRED.
- A COMPLETE GROUNDING SYSTEM SHALL BE PROVIDED AND INSTALLED IN ACCORDANCE WITH ARTICLE 250 OF THE NEC, AND AS SHOWN ON THE DRAWINGS.
- ALL CUTTING AND PATCHING OF WALLS AND FLOORS FOR ELECTRICAL EQUIPMENT SHALL BE THE RESPONSIBILITY OF THE ELECTRICAL CONTRACTOR.
- CONDUCTORS #6 AND SMALLER SHALL BE COPPER RATED AT NOT LESS THAN 600 VOLTS. CONDUCTORS #6 AND LARGER MAY BE ALUMINUM RATED AT NOT LESS THAN 600 VOLTS. MINIMUM SIZE SHALL BE #14 AWG WITHIN RESIDENTIAL UNITS AND #12 ELSEWHERE. ALL WIRE #6 AWG AND LARGER SHALL BE STRANDED. ALL CONDUCTORS #10 AND SMALLER SHALL BE SOLID, UNLESS OTHERWISE NOTED. BRANCH CIRCUIT CONDUCTORS SHALL BE TYPE THHN OR THWN AS REQUIRED.
- ALL WIRING SHALL BE INSTALLED IN GALVANIZED RIGID CONDUIT, INTERMEDIATE METAL CONDUIT, OR EMT, EXCEPT AS ALLOWED BELOW. EMT SHALL NOT BE USED IN OR UNDER CONCRETE SLABS, OR IN MASONRY WALLS. USE SCHEDULE 40 PVC OUTDOORS WHERE NOT SUBJECT TO PHYSICAL DAMAGE OR BELOW FLOOR SLAB. MINIMUM CONDUIT SIZE TO BE 1/2" TYPE MC AND AC CABLE MAY BE USED WHERE FEASIBLE BY NEC. FLEXIBLE CONDUIT SHALL BE USED FOR CONNECTIONS TO VIBRATING EQUIPMENT AND LUMINAIRES, BUT SHALL NOT EXCEED 6' IN LENGTH.
- PROVIDE A PULLWIRE IN ALL EMPTY CONDUITS.
- PROVIDE A TYPED DIRECTORY IN ALL PANELBOARDS CLEARLY DESCRIBING THE LOCATION OF AND TYPE OF LOAD BEING SERVED FOR ALL CIRCUITS. PROVIDE ENGRAVED PHENOLIC NAMEPLATES FOR ALL PANELBOARDS AND DISCONNECT SWITCHES, WHITE LETTERS ON BLACK BACKGROUND.
- FUSES 0 - 600 AMPS SHALL BE UL CLASS "RK-1" LOW PEAK DUAL ELEMENT TIME DELAY WITH 200,000 AMPERE INTERRUPTING RATING AS MANUFACTURED BY BUSSMANN, UNLESS NOTED OTHERWISE.
- ALL TERMINALS/PLUGS SHALL BE 60/75" RATED. ALL TERMINALS, SPLICING CONNECTORS, LUGS, ETC SHALL BE IDENTIFIED FOR USE WITH THE MATERIAL (CU/AL) OF THE CONDUCTOR AND SHALL BE PROPERLY INSTALLED.
- VERIFY ALL REQUIREMENTS AND COORDINATE EXACT LOCATION OF INCOMING ELECTRICAL SERVICE WITH LOCAL POWER COMPANY PRIOR TO PROJECT START-UP. NOTIFY ENGINEER OF ANY CHANGES AS MAY BE REQUIRED.
- E.C. TO VERIFY DEVICE PLATE COLOR AND MATERIAL WITH ARCHITECT PRIOR TO PURCHASE. COORDINATE SWITCHING OF ALL LIGHTS WITH OWNER AND EACH SWITCH SHALL BE LABELED TO INDICATE THE AREA SERVED AND SHALL HAVE ON/OFF MARKS.
- THE ELECTRICAL CONTRACTOR SHALL BE RESPONSIBLE FOR PROTECTING ALL ELECTRICAL EQUIPMENT FROM FOREIGN MATERIAL DURING CONSTRUCTION (PAINT, SPACKLE, ETC.).
- PENETRATIONS OF REQUIRED SMOKE PARTITIONS SHALL BE SEALED USING METHODS APPROVED UNDER THE STATE BUILDING CODE. COORDINATION WITH THE GENERAL CONTRACTOR SHALL BE MAINTAINED TO ENSURE THAT THIS SMOKE STOPPING IS ACCOMPLISHED. USE APPROVED U.L. OR EQUIVALENT ASSEMBLIES.
- IN REQUIRED FIRE RATED WALLS AND PARTITIONS, OPENINGS FOR INSTALLATION OF BOXES THAT ARE GREATER THAN 16 SQUARE INCHES SHALL BE PROTECTED AS REQUIRED BY U.L. COORDINATE CLOSELY WITH THE GENERAL CONTRACTOR TO INSURE THAT THE INTEGRITY OF THE U.L. RATING IS MAINTAINED.
- WHERE A HOME RUN IS SHOWN THE CIRCUIT SHALL BE INSTALLED IN A DEDICATED CONDUIT, DO NOT COMBINE WITH OTHER CIRCUITS. WHERE A CIRCUIT HOMERUN IS NOT SHOWN, THE CONTRACTOR SHALL COMBINE CIRCUITS AS FOLLOWS: A MAXIMUM OF THREE 20A BRANCH CIRCUITS MAY BE COMBINED IN A COMMON HOMERUN WITH SEPARATE NEUTRALS FOR A MAXIMUM TOTAL OF SIX CURRENT CARRYING CONDUCTORS. ALL BRANCH CIRCUITS LARGER THAN 20A SHALL BE SEPARATELY HOMERUN TO THE PANEL.
- COORDINATE WITH THE CABLE TV AND TELEPHONE UTILITIES FOR SERVICE ENTRANCE AND CABLING REQUIREMENTS PRIOR TO ANY PURCHASING. INSTALLATION MUST COMPLY WITH THEIR RESPECTIVE REGULATIONS AND REQUIREMENTS.
- RECEPTACLES IN COMMERCIAL AREAS SHALL BE SPECIFICATION GRADE EQUAL TO HUBBELL 5200/5300 SERIES; GROUND FAULT RECEPTACLES SHALL BE EQUAL TO HUBBELL GF-5362. GROUND FAULT RECEPTACLES SHALL BE EQUAL TO COOPER VGF SERIES. LIGHTING SWITCHES SHALL BE SPECIFICATION GRADE EQUAL TO HUBBELL I200 SERIES. ENSURE DEVICES ARE INSTALLED IN COMPLIANCE WITH ANSI A117.1 FOR ADA REQUIREMENTS.
- ALL EXTERIOR FIXTURES AND DEVICES SHALL BE RATED FOR OPERATION AT 0° F AND SHALL BE DAMP OR WET LABELED AS REQUIRED.
- THE ELECTRICAL CONTRACTOR SHALL BE RESPONSIBLE FOR INSTALLING ALL ELECTRICAL EQUIPMENT, DEVICES, ETC. IN ACCORDANCE WITH LOCAL SEISMIC CODE REQUIREMENTS. PROVIDE SEISMIC RESTRAINTS, ACCESSORIES AND INSTALLATION DETAIL AS REQUIRED.
- ALL QUESTIONS MUST BE SUBMITTED IN RFI FORMAT TO THE ARCHITECT AND MUST BE ADDRESSED BY THE APPROPRIATE DESIGNER OF RECORD PRIOR TO BECOMING A PROPOSED CHANGE ORDER.
- OUTLETS SHALL BE STAGGERED BETWEEN STUDS TO REDUCE SOUND TRANSMISSION.
- VERIFY THAT ALL CONDUIT PENETRATIONS FROM THE INTERIOR TO THE EXTERIOR OF THE BUILDING AND OF THE WALK-IN REFRIGERATOR AND FREEZER ARE SEALED PER N.E.C. 300.7(A).

ELECTRICAL SYMBOL LEGEND

	CIRCUIT CONDUCTORS CONCEALED IN FLOOR, WALL OR CEILING.
	ARROWHEAD INDICATES HOMERUN TO PANEL NOTED.
	INDICATES HOT LEG OF CIRCUIT TO BE CARRIED OVER TO NEXT DEVICE. SEE PLANS FOR CONTROL SCHEME.
	JUNCTION BOX CEILING MOUNTED.
	JUNCTION BOX FLOOR MOUNTED.
	JUNCTION BOX WALL MOUNTED AT HEIGHT INDICATED ON DRAWINGS.
	SINGLE POLE SWITCH, 20A, 120/277 VOLT, 46" A.F.F. TO CENTER. "3" INDICATES 3-WAY SWITCH. "4" INDICATES 4-WAY SWITCH. "D" INDICATES DIMMER SWITCH OF TYPE TO SUIT LOAD. "H" INDICATES HINGE MOUNTED PUSH OFF SWITCH. "K" INDICATES KEY OPERATED SWITCH. "M" INDICATES 120V, 20A MOTOR RATED TOGGLE SWITCH.
	INDICATES FLUORESCENT FIXTURES DUAL SWITCHED, INBOARD/OUTBOARD SWITCHED SEPARATELY.
	SINGLE RECEPTACLE, 20 AMP, 120 VOLT, 18" A.F.F. TO CENTER.
	DUPLEX RECEPTACLE, 15 AMP, 120 VOLT, 18" A.F.F. TO CENTER. "GFI" INDICATES GROUND FAULT CIRCUIT INTERRUPTER TYPE. "WP" INDICATES WEATHERPROOF. "FENC" INDICATES MOUNT GFI RECEPTACLE BESIDE ENCLOSURE OF ELECTRIC WATER COOLER. "TR" INDICATES TAMPER RESISTANT.
	QUADRUPLEX RECEPTACLE, AS ABOVE, 18" A.F.F.
	DUPLEX RECEPTACLE, AS ABOVE, SPLIT WIRED, TOP HALF SWITCHED, 18" A.F.F.
	DUPLEX RECEPTACLE, AS ABOVE, MOUNTED 6" ABOVE COUNTER TOP OR 4" ABOVE BACKSPLASH, AS APPROPRIATE, OR AT HEIGHT INDICATED.
	DUPLEX RECEPTACLE, AS ABOVE, MOUNTED 6" ABOVE COUNTER TOP OR 4" ABOVE BACKSPLASH, AS APPROPRIATE, OR AT HEIGHT INDICATED, WITH GFI PROTECTION.
	RECESSED FLUSH FLOOR DUPLEX RECEPTACLE WITH BRASS COVERPLATE. COORDINATE EXACT FINISH WITH ARCHITECT AND OWNER.
	208V RECEPTACLE, SEE PLANS FOR NEMA CONFIGURATION.
	TELEPHONE OUTLET, 18" A.F.F. TO CENTER OR ALIGN MOUNTING HEIGHT WITH ADJACENT DEVICE, UNLESS OTHERWISE NOTED. PROVIDE 3/4" CONDUIT TO ACCESSIBLE CEILING. ALIGN MOUNTING HEIGHT WITH ADJACENT DEVICE.
	DATA OUTLET, 18" A.F.F. TO CENTER OR ALIGN MOUNTING HEIGHT WITH ADJACENT DEVICE, UNLESS OTHERWISE NOTED. PROVIDE 1" CONDUIT TO ACCESSIBLE CEILING.
	TELEPHONE/DATA OUTLET, 18" A.F.F. TO CENTER OR ALIGN MOUNTING HEIGHT WITH ADJACENT DEVICE, UNLESS OTHERWISE NOTED. PROVIDE 1" CONDUIT TO ACCESSIBLE CEILING.
	HEAVY DUTY FUSIBLE/NON-FUSIBLE DISCONNECT SWITCH, NUMBERS INDICATE FRAME SIZE, NUMBER OF POLES AND FUSING. PROVIDE NEMA 1 ENCLOSURE INSIDE. PROVIDE NEMA 3 ENCLOSURE FOR ALL SWITCHES LOCATED OUTSIDE. "FPN" INDICATES FUSE PER EQUIPMENT NAMEPLATE. "NF" INDICATES NON-FUSED. "MS" INDICATES MOTOR STARTER OF TYPE TO SUIT LOAD.
	ELECTRICAL PANEL, SURFACE OR RECESS MOUNTED, SEE SCHEDULE FOR DETAILS.
	FAN, PROVIDED AND INSTALLED BY MECHANICAL CONTRACTOR, WIRED BY ELECTRICAL CONTRACTOR. PROVIDE DISCONNECTING MEANS AS REQUIRED.
	WATER HEATER, PROVIDED AND INSTALLED BY PLUMBING CONTRACTOR, WIRED BY ELECTRICAL CONTRACTOR. PROVIDE DISCONNECTING MEANS AS REQUIRED.
	ELECTRIC UTILITY METER LOCATION.

ELECTRICAL MOTION SENSOR LEGEND

	WALL SWITCH PASSIVE INFRARED AND MICROPHONIC OCCUPANCY SENSOR EQUAL TO SENSOR SWITCH MODEL WSD PDT. TIME DELAYS 10 MINUTES FOR ON/OFF.
	WALL OR CEILING MOUNTED PASSIVE INFRARED OCCUPANCY SENSOR EQUAL TO SENSOR SWITCH MODEL HW 13. TIME DELAYS 10 MINUTES FOR ON/OFF.
	CEILING MOUNTED PASSIVE INFRARED AND MICROPHONIC OCCUPANCY SENSOR EQUAL TO SENSOR SWITCH MODEL CM PDT 9. TIME DELAYS 10 MINUTES FOR ON/OFF.
	CEILING MOUNTED PASSIVE INFRARED AND MICROPHONIC OCCUPANCY SENSOR EQUAL TO SENSOR SWITCH MODEL CM PDT 10. TIME DELAYS 20 MINUTES FOR ON/OFF.
	CORNER MOUNTED PASSIVE INFRARED OCCUPANCY SENSOR EQUAL TO SENSOR SWITCH MODEL WV 16. TIME DELAYS 10 MINUTES FOR ON/OFF.
	CORNER MOUNTED PASSIVE INFRARED OCCUPANCY SENSOR EQUAL TO SENSOR SWITCH MODEL WV 16 R P. TIME DELAYS 10 MINUTES FOR ON/OFF.
	CORNER MOUNTED PASSIVE INFRARED AND MICROPHONIC OCCUPANCY SENSOR EQUAL TO SENSOR SWITCH MODEL WV PDT 16 R P. TIME DELAYS 10 MINUTES FOR ON/OFF.
	WALL SWITCH PASSIVE INFRARED OCCUPANCY SENSOR EQUAL TO SENSOR SWITCH MODEL WSD. TIME DELAYS 10 MINUTES FOR ON/OFF.
	CEILING MOUNTED PASSIVE INFRARED AND MICROPHONIC OCCUPANCY SENSOR EQUAL TO SENSOR SWITCH MODEL CM PDT 10. TIME DELAYS 10 MINUTES FOR ON/OFF.
	THE MOTION SENSOR LAYOUT SHALL BE REVIEWED AND ADJUSTED BY THE ACTUAL DEVICE MANUFACTURER WHICH THE CONTRACTOR SELECTS. THE CONTRACTOR SHALL PROVIDE SHOP DRAWINGS FOR THE SYSTEM TO THE ENGINEER FOR REVIEW, PRIOR TO PURCHASE AND INSTALLATION.

SYSTEM COMMISSIONING NOTES (NCECC C408)

COMMISSIONING REQUIREMENTS ARE NOT REQUIRED FOR THIS BUILDING, PER EXEMPTION UNDER NCECC C408.1, WHICH ALLOWS COMMISSIONING EXEMPTIONS FOR BUILDINGS LESS THAN OR EQUAL TO 10,000 SQUARE FEET OF CONDITIONED SPACE. THIS BUILDING CONTAINS 74,100 SQUARE FEET OF CONDITIONED SPACE.

LIGHTING FIXTURE SCHEDULE

MARK	MANUF.	CATALOG NUMBER	LAMP DATA		VOLTS	BALLAST DATA		INPUT WATTS	MOUNTING	DESCRIPTION
			NO.	TYPE		NO.	TYPE			
A	TGS	FL-6-L-C-U-D-90CRI	-	LED 3500K	120/277	-	-	17	RECESSED	GENERAL, HALL, THROUGHOUT - 6" LED DOWNLIGHT WITH WHITE FINISH (LUMEN SELECTABLE).
B	TGS	FL-6-L-C-U-D-90CRI	-	LED 3500K	120/277	-	-	22	RECESSED / GRID	KITCHEN - 6" LED DOWNLIGHT WITH WHITE FINISH (LUMEN SELECTABLE).
C	SIGNIFY	SD-7R-SLM-Z10-SCT-UNV-WT	-	LED	UNV	-	-	14	SURFACE	OFFICE, PREP - 7" LED DOWNLIGHT WITH WHITE FINISH (FIELD SELECTABLE).
D	TGS	EA-P24-L-C-U-D	-	LED 3500K	120/277	-	-	50	RECESSED / GRID	KITCHEN - 2X4 BACKLIT LED PANEL W/ WHITE FINISH (LUMEN SELECTABLE).
F	TGS	EA-P22-L-C-U-D	-	LED 3500K	120/277	-	-	40	RECESSED / GRID	KITCHEN - 2X2 BACKLIT LED PANEL W/ WHITE FINISH (LUMEN SELECTABLE).
G	LUXEHOMEZONE	ART GLASS GHIACCIO ROUND CHANDELIER 36"	6	E12 LED 3000K	120	-	-	60	PENDANT (HEIGHT BY ARCH)	DINING ROOM - 36" LED PENDANT WITH FINISH BY OWNER; COORDINATE MOUNTING OPTION / STEM WITH ARCHITECT.
M	HE WILLIAMS	FS-4-L5/8C5-DIM-UNV	-	LED 3500K	UNV	-	-	32	SURFACE	STORAGE - 4" LED STRIP W/ WHITE FINISH.
P	TGS	HXR-0305-20-30-45-DI-WH-WH-AC	-	LED 3500K	120/277	-	-	20	PENDANT (HEIGHT BY ARCH)	DINING ROOM - 3" LED PENDANT W/ WHITE FINISH; COORDINATE MOUNTING OPTION / STEM WITH ARCHITECT.
S	HE WILLIAMS	SLF-2-L26/830-HIA-DIM-UNV	-	LED 3500K	UNV	-	-	22	WALL (HEIGHT BY ARCH)	STAIRS - 2" WALL MOUNTED LED W/ WHITE FINISH.
W	TGS	MWSR-14-CC-BN	-	LED 3500K	120	-	-	16	WALL (HEIGHT BY ARCH)	BAR, DINING, MEZZANINE - 14" LED WALL SCONCE W/ BRUSHED NICKEL FINISH.
W2	VISUAL COMFORT & CO.	S 2692HAB-CG	-	LED 3500K	120	-	-	3	WALL (HEIGHT BY ARCH)	DINING - CALVINO ARCHED SINGLE LED WALL SCONCE W/ FINISH BY ARCHITECT.
MW	TGS	VFI-2425-CC-BN	-	LED 3500K	120	-	-	25	WALL (HEIGHT BY ARCH)	VANITY - 24" WALL MOUNTED LED W/ BRUSHED NICKEL FINISH.
FL	BROAN	H80L (COORDINATE PURCHASE AND INSTALLATION WITH M.C.)	-	LED	120	-	-	43	RECESSED	BATHROOM - FAN/LIGHT COMBINATION UNIT WITH 80CFM FAN AND WHITE ACRYLIC DIFFUSER.
CL	DIODE LED	DI-24V-BLBS3-35K-XX-RC20-AL-MC-010 (XX=LENGTH: SEE PLANS)	-	LED 3500K	24	-	-	45W/FT	SURFACE (COORD. W/ MILLWORK)	WAIT STATION, BAR - LED TAPE LIGHT W/ ALUMINUM FINISH; PROVIDE TRANSFORMER IN ACCESSIBLE LOCATION; COORDINATE WITH MANUFACTURER.
TL	DIODE LED	DI-24V-BLBS3-35K-XX-A2-AL-MC-010 (XX=LENGTH: SEE PLANS)	-	LED 3500K	24	-	-	45W/FT	SURFACE (COORD. W/ MILLWORK)	BAR - LED TAPE LIGHT W/ ALUMINUM FINISH; PROVIDE TRANSFORMER IN ACCESSIBLE LOCATION; COORDINATE WITH MANUFACTURER.
KC	N/A	BY MANUFACTURER (PROVIDED WITH EQUIPMENT)	-	LED	120/277	-	-	40	SURFACE (COORD. W/ VENDOR)	OVERHEAD LIGHTS PROVIDED BY COOLER / FREEZER MANUFACTURER (FULLY ENCLOSED AND GASKETED); INSTALLED BY E.C.
KH	N/A	BY MANUFACTURER (PROVIDED WITH EQUIPMENT)	-	LED	120/277	-	-	20	SURFACE (COORD. W/ VENDOR)	U.L. LISTED LED LIGHTS PROVIDED BY HOOD MANUFACTURER FOR KITCHEN HOOD APPLICATION; INSTALLED BY E.C.
EX	SIGNIFY CHLORIDE	CN-6-GC-A-1	-	LED	UNV	-	-	4	SURFACE	EDGE-LIT EXIT SIGN WITH GREEN LETTERS, CLEAR PANEL AND BRUSHED ALUMINUM HOUSING; PROVIDE TWO-FACED OPTION WHERE NOTED ON PLAN.
EX	SIGNIFY CHLORIDE	CLR2W	-	LED	UNV	-	NA	4	SURFACE	SURFACE LED EMERGENCY LIGHT. MOUNT AT 96" AFF TO BOTTOM; MAX 56" SPACING. PROVIDE WITH 90-MINUTE BATTERY BACKUP.

LIGHTING FIXTURE SCHEDULE NOTES:

- CATALOG NUMBERS AND MANUFACTURERS ARE TO INDICATE TYPE AND QUALITY OF FIXTURE DESIRED. SUBMIT CUTSHEETS OF THESE AND ALTERNATE MANUFACTURERS FOR ARCHITECT AND OWNER APPROVAL PRIOR TO PURCHASE OF ANY FIXTURES. INFORMATION ON ALTERNATE FIXTURES PROPOSED BY THE CONTRACTOR SHALL INCLUDE THE ADD/DEDUCT ASSOCIATED WITH ACCEPTANCE OF THAT FIXTURE (OR THE ALTERNATE PACKAGE AS A WHOLE).
- EXIT AND EMERGENCY LIGHTING FIXTURES SHALL BE CIRCUITED TO AN UNSWITCHED LEG OF THE LOCAL LIGHTING CIRCUIT, UNLESS NOTED OTHERWISE.
- PROVIDE DISCONNECT FOR LUMINAIRES WITH LINEAR FLUORESCENT LAMPS AND/OR SERVICEABLE BALLASTS PER NEC 410.130(G).
- WHERE FIXTURE IS LOCATED RECESSED IN A RATED FLOOR/CEILING ASSEMBLY PROVIDE WITH TENMAT 1-HOUR OR 2-HOUR FIRE RATED LIGHT COVER TO MATCH ASSEMBLY RATING.
- COLOR TEMPERATURES OF LED LAMPS SHALL BE CONFIRMED WITH THE ARCHITECT.
- CLEAN AND RELAMP ALL EXISTING FIXTURES PRIOR TO OWNER SIGN-OFF.
- ALL LIGHTS LOCATED OVER, BY OR WITHIN FOOD STORAGE, PREPARATION, SERVICE OR DISPLAY FACILITIES, AND FACILITIES WHERE UTENSILS AND EQUIPMENT ARE CLEANED AND STORED, ARE TO BE PROTECTED TO PREVENT BROKEN GLASS FROM FALLING INTO FOOD OR ONTO FOOD-CONTACT SURFACES.
- CONTRACTOR TO VERIFY QUANTITIES.
- CONFIRM MANUFACTURER, TYPE AND FINISH OF ALL LIGHTING FIXTURES AND ACCESSORIES WITH ARCHITECT AND OWNER PRIOR TO PURCHASE AND INSTALLATION.**

LIGHTING SYSTEMS

ENERGY CONSERVATION CODE SECTION 405

THIS PROJECT IS CLASSIFIED AS - RESIDENTIAL COMMERCIAL (SEE BELOW)

LIGHTING POWER DENSITY CALCULATION COMPLIANCE

INTERIOR LIGHTING POWER DENSITY CALCULATION PER TABLE 405.4.2. SEE LIGHTING FIXTURE SCHEDULE FOR FIXTURE INFORMATION.

INTERIOR WATTAGE SPECIFIED VS. ALLOWED 2,827 VS. 3,690

EXTERIOR LIGHTING POWER DENSITY CALCULATION PER TABLE 405.6.2. SEE LIGHTING FIXTURE SCHEDULE FOR FIXTURE INFORMATION.

TRADABLE EXTERIOR WATTAGE SPECIFIED VS. ALLOWED EXIST VS. EXIST
NONTRADABLE EXTERIOR WATTAGE SPECIFIED VS. ALLOWED NA VS. NA

SECTION 406 COMPLIANCE - N/A 406.11 406.12 406.13 406.14 406.15 406.16

DESIGNER STATEMENT:

TO THE BEST OF MY KNOWLEDGE AND BELIEF, THE DESIGN OF THIS BUILDING COMPLIES WITH THE LIGHTING SYSTEMS REQUIREMENTS OF THE INTERNATIONAL ENERGY CONSERVATION CODE, SECTION 505 AND ANY LOCAL AMENDMENTS THEREOF.

SIGNED: Heath Smith
NAME: HEATH SMITH, PE
TITLE: ELECTRICAL ENGINEER

ELECTRICAL DEMOLITION NOTES

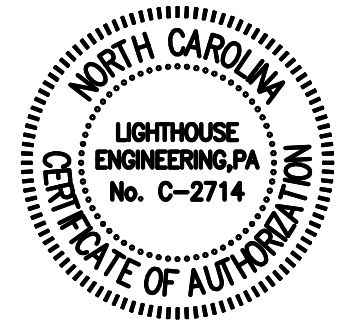
- DRAWINGS ARE BASED ON EXISTING PLANS AND NON-DESTRUCTIVE FIELD INVESTIGATIONS. THE CONTRACTOR SHALL VISIT THE EXISTING BUILDING AND FAMILIARIZE HIMSELF WITH THE EXISTING CONDITIONS. THE CONTRACTOR SHALL EXAMINE RELATED DRAWINGS TO AVOID CONFLICTS.
- PROVIDE ELECTRICAL DEMOLITION WORK AS NECESSARY TO INSTALL NEW WORK. ELECTRICAL CONTRACTOR SHALL REROUTE AND RECONNECT ANY CIRCUITS THAT WILL REMAIN IN USE BUT INTERFERES WITH NEW CONSTRUCTION.
- MATERIAL BEING REMOVED UNDER DEMOLITION (AND NOT TO BEING RELOCATED) SHALL BECOME THE PROPERTY OF THE CONTRACTOR AND SHALL BE REMOVED COMPLETELY FROM THE SITE, UNLESS OTHERWISE NOTED.
- EXISTING CONDUITS THAT WILL NOT BE REUSED SHALL BE REMOVED IN CEILING PLenums AND WALLS. OTHERS MAY BE ABANDONED BELOW FLOOR SLABS. CONTRACTOR SHALL REMOVE ALL WIRING FROM ABANDONED CONDUITS. CUT-OFF ABANDONED CONDUITS BELOW FLOOR AND GROUT FLUSH WITH NON-CONTRACTING GROUT.
- ABANDONED DEVICES SHALL BE REMOVED WITH THE JUNCTION BOX. WALLS SHALL BE PATCHED TO MATCH ADJACENT SURFACES.
- CONTRACTOR SHALL EXERCISE CARE IN REMOVING DEMOLITION ITEMS AND SHALL REPAIR OR REPLACE AT HIS COST ANY DAMAGE CAUSED TO EXISTING CONSTRUCTION AND EQUIPMENT TO REMAIN.
- SCHEDULE WORK IN EXISTING BUILDING AT TIME CONVENIENT TO OWNER.
- DEVICES TO BE REMOVED AND NOT REINSTALLED SHALL HAVE JUNCTION BOXES, CONDUCTORS, CONDUIT AND ALL ASSOCIATED APPURTENANCES REMOVED BACK TO LAST ACTIVE DEVICE OR PANELBOARD.

ELECTRICAL ABBREVIATIONS

18"	DIMENSION INDICATES HEIGHT ABOVE FINISHED FLOOR AT WHICH CENTER OF DEVICE IS TO BE MOUNTED.
AFF	ABOVE FINISHED FLOOR.
AFG	ABOVE FINISHED GRADE.
E.C.	ELECTRICAL CONTRACTOR.
FPN	FUSE PER EQUIPMENT NAMEPLATE REQUIREMENTS.
G.C.	GENERAL CONTRACTOR.
M.C.	MECHANICAL CONTRACTOR.
P.C.	PLUMBING CONTRACTOR.
WP	INDICATES DEVICE TO HAVE WEATHERPROOF COVER.
UON	UNLESS OTHERWISE NOTED.
NL	NIGHT LIGHT, LIGHT NOT SWITCHED.

Drawing Sheet List

#	Title
E001	Electrical Legend, Notes, and Schedules
E002	Electrical Riser Diagram
E101	Electrical Lighting Plan - 1st Floor
E102	Electrical Lighting Plan - 2nd Floor
E201	Electrical Power Plan - 1st Floor
E202	Electrical Power Plan - 2nd Floor



mon(arc) studio

701 W Trinity Ave #117
Durham, NC 27701

for permit 10/11/24

DATE 02/21/2025

BY [Signature]

DATE 02/21/2025

BY [Signature]

DATE 02/21/2025

BY [Signature]

DATE 02/21/2025

BY [Signature]

DATE 02/21/2025

BY [Signature]

DATE 02/21/2025

BY [Signature]

DATE 02/21/2025

BY [Signature]

DATE 02/21/2025

BY [Signature]

DATE 02/21/2025

BY [Signature]

DATE 02/21/2025

BY [Signature]

DATE 02/21/2025

BY [Signature]

DATE 02/21/2025

BY [Signature]

DATE 02/21/2025

BY [Signature]

DATE 02/21/2025

BY [Signature]

DATE 02/21/2025

BY [Signature]

DATE 02/21/2025

BY [Signature]

DATE 02/21/2025

BY [Signature]

DATE 02/21/2025

BY [Signature]

DATE 02/21/2025

BY [Signature]

DATE 02/21/2025

BY [Signature]

DATE 02/21/2025

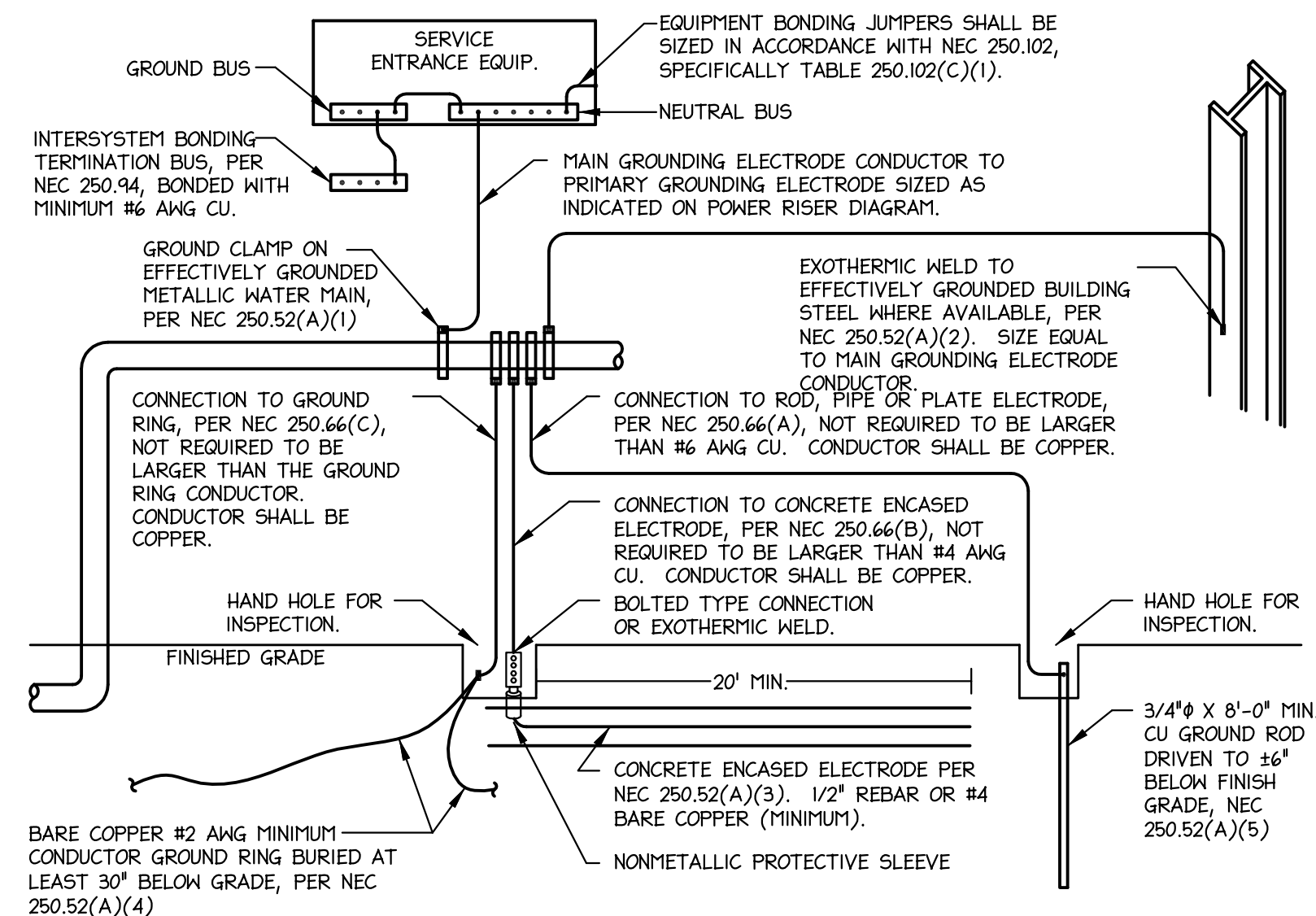
BY [Signature]

DATE 02/21/2025

BY [Signature]

DATE 02/21/2025

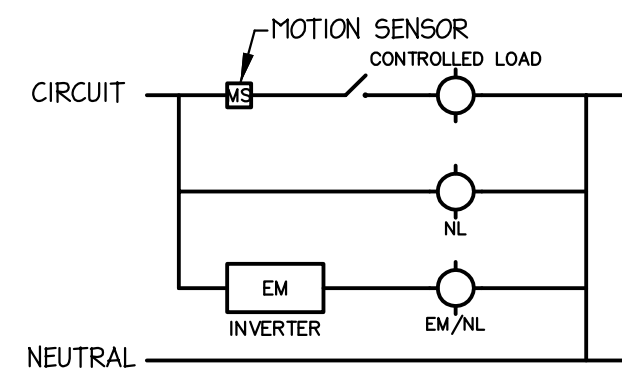
BY [Signature]



2 GROUNDING DETAIL
NTS

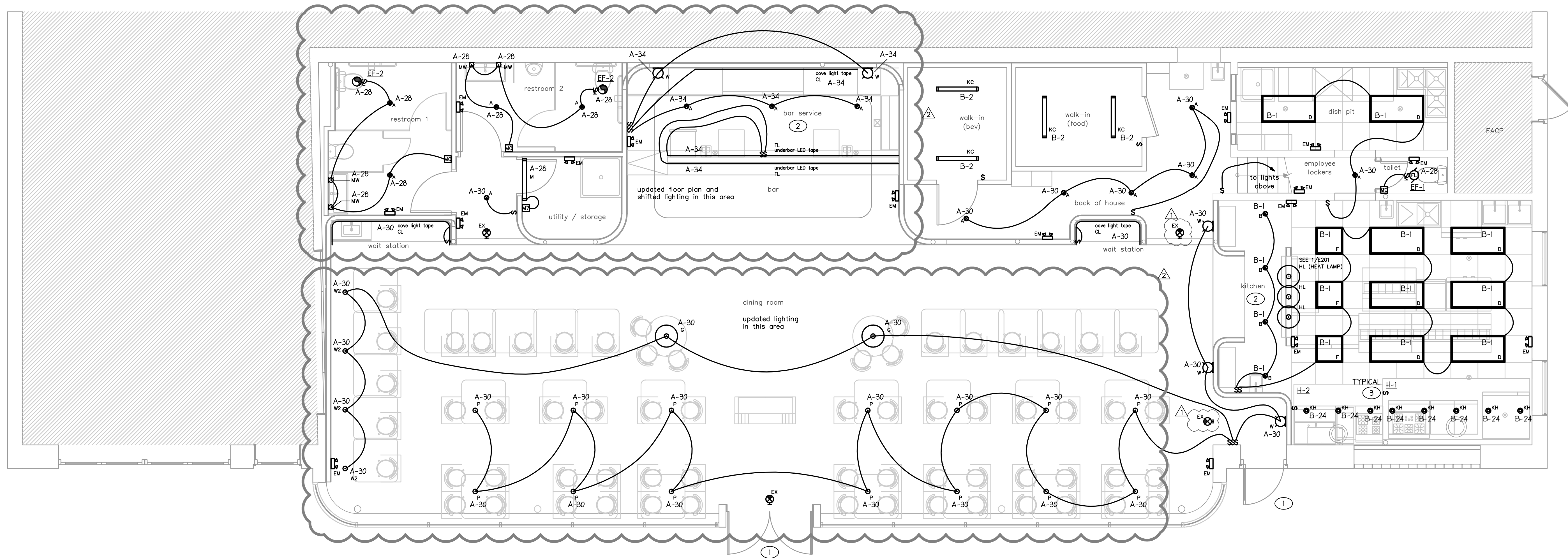
GROUNDING ELECTRODES SHALL BE PROVIDED IN ACCORDANCE WITH NEC SECTION 250. ALL GROUNDING ELECTRODE CONDUCTORS SIZED AS INDICATED ON POWER RISER DIAGRAM. ALL METHODS OF CREATING THE GROUNDING SYSTEM MAY NOT BE REQUIRED OR AVAILABLE.

EXISTING		NEW		TOTAL	
LOAD PER PHASE		LOAD PER PHASE		LOAD PER PHASE	
PHASE	WIRE SIZE	PHASE	WIRE SIZE	PHASE	WIRE SIZE
A	B	C	A	B	C
1	2	3	1	2	3
4	5	6	4	5	6
7	8	9	7	8	9
10	11	12	10	11	12
13	14	15	13	14	15
16	17	18	16	17	18
19	20	21	19	20	21
22	23	24	22	23	24
25	26	27	25	26	27
28	29	30	28	29	30
31	32	33	31	32	33
34	35	36	34	35	36
37	38	39	37	38	39
40	41	42	40	41	42
43	44	45	43	44	45
46	47	48	46	47	48
49	50	51	49	50	51
52	53	54	52	53	54
55	56	57	55	56	57
58	59	60	58	59	60
61	62	63	61	62	63
64	65	66	64	65	66
67	68	69	67	68	69
70	71	72	70	71	72
73	74	75	73	74	75
76	77	78	76	77	78
79	80	81	79	80	81
82	83	84	82	83	84
85	86	87	85	86	87
88	89	90	88	89	90
91	92	93	91	92	93
94	95	96	94	95	96
97	98	99	97	98	99
100	101	102	100	101	102
103	104	105	103	104	105
106	107	108	106	107	108
109	110	111	109	110	111
112	113	114	112	113	114
115	116	117	115	116	117
118	119	120	118	119	120
121	122	123	121	122	123
124	125	126	124	125	126
127	128	129	127	128	129
130	131	132	130	131	132
133	134	135	133	134	135
136	137	138	136	137	138
139	140	141	139	140	141
142	143	144	142	143	144
145	146	147	145	146	147
148	149	150	148	149	150
151	152	153	151	152	153
154	155	156	154	155	156
157	158	159	157	158	159
160	161	162	160	161	162
163	164	165	163	164	165
166	167	168	166	167	168
169	170	171	169	170	171
172	173	174	172	173	174
175	176	177	175	176	177
178	179	180	178	179	180
181	182	183	181	182	183
184	185	186	184	185	186
187	188	189	187	188	189
190	191	192	190	191	192
193	194	195	193	194	195
196	197	198	196	197	198
199	200	201	199	200	201
202	203	204	202	203	204
205	206	207	205	206	207
208	209	210	208	209	210
211	212	213	211	212	213
214	215	216	214	215	216
217	218	219	217	218	219
220	221	222	220	221	222
223	224	225	223	224	225
226	227	228	226	227	228
229	230	231	229	230	231
232	233	234	232	233	234
235	236	237	235	236	237
238	239	240	238	239	240
241	242	243	241	242	243
244	245	246	244	245	246
247	248	249	247	248	249
250	251	252	250	251	252
253	254	255	253	254	255
256	257	258	256	257	258
259	260	261	259	260	261
262	263	264	262	263	264
265	266	267	265	266	267
268	269	270	268	269	270
271	272	273	271	272	273
274	275	276	274	275	276
277	278	279	277	278	279
280	281	282	280	281	282
283	284	285	283	284	285
286	287	288	286	287	288
289	290	291	289	290	291
292	293	294	292	293	294
295	296	297	295	296	297
298	299	300	298	299	300
301	302	303	301	302	303
304	305	306	304	305	306
307	308	309	307	308	309
310	311	312	310	311	312
313	314	315	313	314	315
316	317	318	316	317	318
319	320	321	319	320	321
322	323	324	322	323	324
325	326	327	325	326	327
328	329	330	328	329	330
331	332	333	331	332	333
334	335	336	334	335	336
337	338	339	337	338	339
340	341	342	340	341	342
343	344	345	343	344	345
346	347	348	346	347	348
349	350	351	349	350	351
352	353	354	352	353	354
355	356	357	355	356	357
358	359	360	358	359	360
361	362	363	361	362	363
364	365	366	364	365	366
367	368	369	367	368	369
370	371	372	370	371	372
373	374	375	373	374	375
376	377	378	376	377	378
379	380	381	379	380	381
382	383	384	382	383	384
385	386	387	385	386	387
388	389	390	388	389	390
391	392	393	391	392	393
394	395	396	394	395	396
397	398	399	397	398	399
400	401	402	400	401	402
403	404	405	403	404	405
406	407	408	406	407	408
409	410	411	409	410	411
412	413	414	412	413	414
415	416	417	415	416	417
418	419	420	418	419	420
421	422	423	421	422	423
424	425	426	424	425	426
427	428	429	427	428	429
430	431	432	430	431	432
433	434	435	433	434	435
436	437	438	436	437	438
439	440	441	439	440	441
442	443	444	442	443	444
445	446	447	445	446	447
448	449	450	448	449	450
451	452	453	451	452	453
454	455	456	454	455	456
457	458	459	457	458	459
460	461	462	460	461	462
463	464	465	463	464	465
466	467	468	466	467	468
469	470	471	469	470	471
472	473	474	472	473	474
475	476	477	475	476	477
478	479	480	478	479	480
481	482	483	481	482	483
484	485	486	484	485	486
487	488	489	487	488	489
490	491	492	490	491	492
493	494	495	493	494	495
496	497	498	496	497	498
499	500	501	499	500	501
502	503	504	502	503	504
505	506	507	505	506	507
508	509	510	508	509	510
511	512	513	511	512	513
514	515	516	514	515	516
517	518	519	517	518	519
520	521	522	520	521	522
523	524	525	523	524	525
526	527	528	526	527	528
529	530	531	529	530	531
532	533	534	532	533	534
535	536	537	535	536	537
538	539	540	538	539	540
541	542	543	541	542	543
544	545	546	544	545	546
547	548	549	547	548	549
550	551	552	550	551	552
553	554	555	553	554	555
556	557	558	556	557	558
559	560	561	559	560	561
562	563	564	562	563	564
565	566	567	565	566	567
568	569	570	568	569	570
571	572	573	571	572	573
574	575	576	574	575	576
577	578	579	577	578	579
580	581	582	580	581	582
583	584	585	583	584	585
586	587	588	586	587	588
589	590	591	589	590	591
592	593	594	592	593	594
595	596	597	595	596	597



MOTION SENSOR AHEAD OF LOCAL SWITCHING FOR CONTROLLED FIXTURES ONLY.

1a LIGHTING CONTROLS
NTS



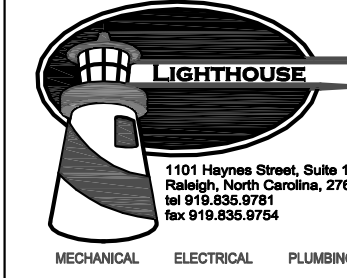
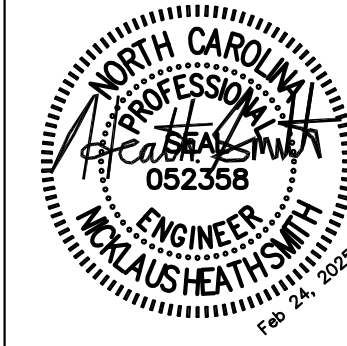
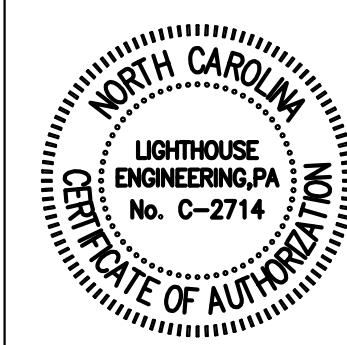
ELECTRICAL LIGHTING - 1ST FLOOR PLAN
1/4" = 1'-0"

- TAGGED NOTES: (ELECTRICAL LIGHTING PLANS)**
- E.C. TO FIELD VERIFY EXISTING EXTERIOR EGRESS AND EMERGENCY LIGHTING, PROVIDED UNDER PREVIOUS PERMIT, IS ADEQUATE AND FULLY OPERATIONAL. PROVIDE ADDITIONAL DEVICES AS REQUIRED. COORDINATE NEW DEVICE LOCATIONS, IF REQUIRED, WITH OWNER PRIOR TO ROUGH-IN.
 - ALL LIGHT BULBS ABOVE BAR AND KITCHEN AREAS SHALL BE COATED / SHATTER-RESISTANT OR FIXTURES SHALL BE PROVIDED WITH LENS. COORDINATE SWITCH LOCATIONS WITH OWNER PRIOR TO ROUGH-IN.
 - FIELD VERIFY SWITCH LOCATION WITH HOOD PROVIDER.

- ELECTRICAL GENERAL NOTES: (PREP / KITCHEN / BAR AREAS)**
- LIGHT FIXTURES UNDER HOOD (TYPE "KH"), BY HOOD MANUFACTURER, SHALL PROVIDE 50FC FOR FOOD PREPARATION.
 - E.C. SHALL VERIFY FOOT CABLES AT ALL FOOD HANDLING AND COUNTER EQUIPMENT NC FOOD CODE CH. 6-303.11, AND ALL OTHER LOCAL AREAS MEET REQUIREMENTS PRIOR TO FINAL APPROVAL.
 - LIGHTING LEVELS SHALL MEET A MINIMUM REQUIREMENT OF 20 FOOT-CANDLES AT SELF-SERVE COUNTERS, INSIDE EQUIPMENT, AND IN AREAS FOR WASHING AND STORAGE; AND 50 FOOT-CANDLES ON SURFACES WHERE AN EMPLOYEE IS WORKING WITH FOOD; PER NC FC CH. 6.303.11.

- GENERAL NOTES: (ELECTRICAL LIGHTING PLANS)**
- EXISTING INFORMATION WAS OBTAINED FROM SITE VISIT DATED 02-20-24. E.C. SHALL VERIFY ALL FIELD CONDITIONS PRIOR TO BEGINNING WORK.
 - E.C. SHALL COORDINATE THE REUSE OF ANY EXISTING ITEMS WITH OWNER PRIOR TO BEGINNING WORK. E.C. SHALL PROVIDE A DEDUCT FOR REUSE OF ANY ITEMS THAT ARE NOT CURRENTLY SHOWN TO BE REUSED.
 - LIGHTING LAYOUT AND SWITCH LOCATIONS SHALL BE COORDINATED WITH ARCHITECT AND OWNER PRIOR TO INSTALLATION; LIGHTING LAYOUTS INDICATED ARE SCHEMATIC. GC TO COORDINATE WITH ARCHITECT AND OWNER TO DETERMINE FINAL LOCATIONS PRIOR TO ROUGH-IN. EACH SWITCH SHALL BE LABELED TO INDICATE THE AREA SERVED AND SHALL HAVE ON/OFF MARKS.
 - PROVIDE RIGID SUPPORT FOR ALL PENDANT LIGHT FIXTURES; PAINT TO MATCH CEILING.

- GENERAL NOTES: (ELECTRICAL LIGHTING PLANS)**
- PAINT ALL EXPOSED STRUCTURE, DUCTWORK, CONDUIT, ETC. OVERHEAD, COLOR AS SELECTED BY OWNER.
 - ACT LAYOUT: UNLESS OTHERWISE NOTED ACT TO BE CENTERED IN ROOM & HAVE AN EQUAL BORDER AT ALL EDGES.
 - SEE ARCHITECTURAL PLANS FOR FURTHER INFORMATION ON SCOPE AND LAYOUTS.
 - FS&C SHALL VERIFY ROUGH-IN REQUIREMENTS FOR ALL EQUIPMENT, INCLUDING OWNER SUPPLIED EQUIPMENT, ETC.
 - COORDINATE ALL DEVICE LOCATIONS (INCLUDING CEILING DEVICES) WITH OTHER TRADES TO AVOID CONFLICTS.



mon(arc) studio

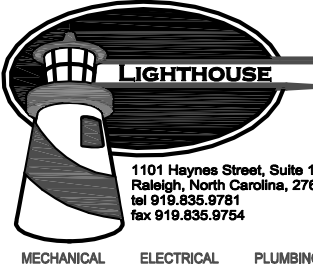
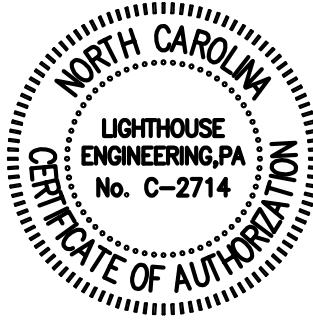
701 W Trinity Ave #117
Durham, NC 27701

for permit 10/11/24
ifc coordination 12/12/2024
ifc 02/21/2025

Hutchins Showroom
a restaurant upfit
408 W Geer St.
Durham, NC 27701

Electrical Lighting
Plan - 1st Floor

E101



mon(arc) studio

701 W Trinity Ave #117
Durham, NC 27701

for permit 10/11/24

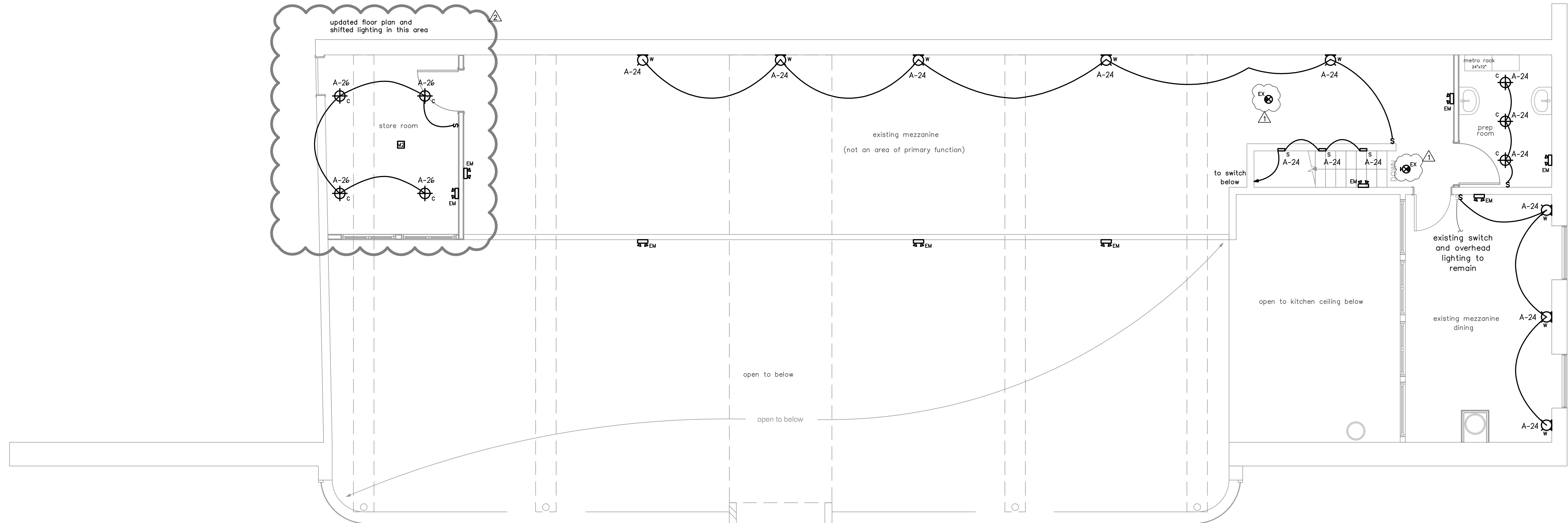
ifc coordination 12/12/2024

ifc 02/21/2025

Hutchins Showroom
a restaurant upfit
408 W Geer St.
Durham, NC 27701

Electrical Lighting
Plan - 2nd Floor

E102



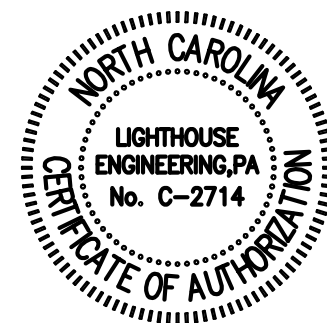
1 **ELECTRICAL LIGHTING -**
2ND FLOOR PLAN
1/4" = 1'-0"

GENERAL NOTES: (ELECTRICAL LIGHTING PLANS)

- EXISTING INFORMATION WAS OBTAINED FROM SITE VISIT DATED 02-20-24. E.C. SHALL VERIFY ALL FIELD CONDITIONS PRIOR TO BEGINNING WORK.
- E.C. SHALL COORDINATE THE REUSE OF ANY EXISTING ITEMS WITH OWNER PRIOR TO BEGINNING WORK. E.C. SHALL PROVIDE A DEDUCT FOR REUSE OF ANY ITEMS THAT ARE NOT CURRENTLY SHOWN TO BE REUSED.
- LIGHTING LAYOUT AND SWITCH LOCATIONS SHALL BE COORDINATED WITH ARCHITECT AND OWNER PRIOR TO INSTALLATION; LIGHTING LAYOUTS, INDICATED ARE SCHEMATIC. GC TO COORDINATE WITH ARCHITECT AND OWNER TO DETERMINE FINAL LOCATIONS PRIOR TO ROUGH-IN. EACH SWITCH SHALL BE LABELED TO INDICATE THE AREA SERVED AND SHALL HAVE ON/OFF MARKS.
- PROVIDE RIGID SUPPORT FOR ALL PENDANT LIGHT FIXTURES; PAINT TO MATCH CEILING.

GENERAL NOTES: (ELECTRICAL LIGHTING PLANS)

- PAINT ALL EXPOSED STRUCTURE, DUCTWORK, CONDUIT, ETC. OVERHEAD, COLOR AS SELECTED BY OWNER.
- ACT LAYOUT: UNLESS OTHERWISE NOTED ACT TO BE CENTERED IN ROOM & HAVE AN EQUAL BORDER AT ALL EDGES.
- SEE ARCHITECTURAL PLANS FOR FURTHER INFORMATION ON SCOPE AND LAYOUTS.
- FSEC SHALL VERIFY ROUGH-IN REQUIREMENTS FOR ALL EQUIPMENT, INCLUDING OWNER SUPPLIED EQUIPMENT, ETC.
- COORDINATE ALL DEVICE LOCATIONS (INCLUDING CEILING DEVICES) WITH OTHER TRADES TO AVOID CONFLICTS.



mon(arc) studio

701 W Trinity Ave #117
Durham, NC 27701

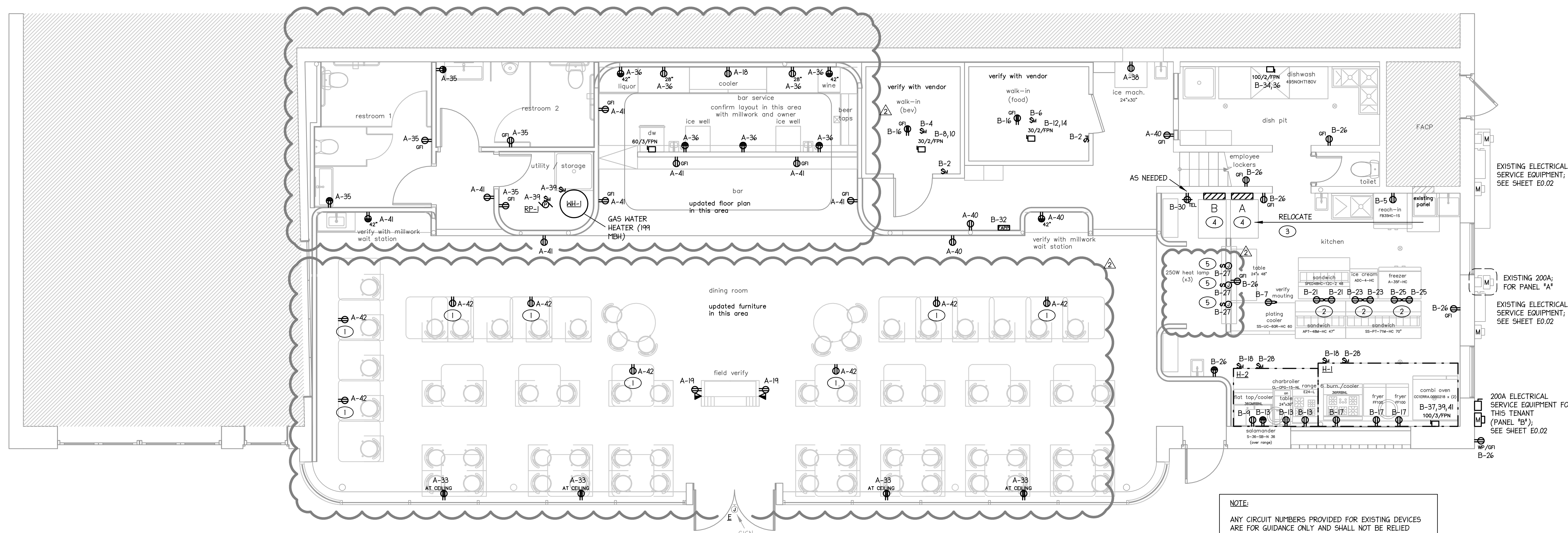
for permit 10/11/24

ifc 02/21/2025

Hutchins Showroom
a restaurant upfit
408 W Geer St.
Durham, NC 27701

Electrical Power
Plan - 1st Floor

E201



NOTE:
ANY CIRCUIT NUMBERS PROVIDED FOR EXISTING DEVICES ARE FOR GUIDANCE ONLY AND SHALL NOT BE RELIED UPON FOR SAFETY PURPOSES. THE INTENT IS FOR EXISTING DEVICES ON THIS PLAN TO REMAIN CIRCUITED AS IS, AND THE CONTRACTOR SHALL ADJUST CIRCUIT ASSIGNMENTS WITHIN A PANEL TO SUIT EXISTING CONDITIONS.

1
ELECTRICAL POWER -
1ST FLOOR PLAN
1/4" = 1'-0"

- TAGGED NOTES: (ELECTRICAL POWER PLANS)**
- COORDINATE EXACT MOUNTING HEIGHT AND LOCATION WITH OWNER PRIOR TO ROUGH-IN.
 - DOUBLE BACK-TO-BACK MONUMENT BOX WITH RIGID CONDUIT.
 - EXISTING ELECTRICAL PANEL "A" AND TIMECLOCK TO BE RELOCATED; EXTEND EXISTING WIRING AS REQUIRED. FURR-OUT AROUND ELECTRICAL PANEL SO THAT PANEL IS RECESSED MOUNTED; COORDINATE WITH ARCHITECT. PROVIDE LOCKABLE COVER FOR ELECTRICAL PANEL AND TIMECLOCK.
 - A 30" WIDE X 36" DEEP AREA IN FRONT OF EACH ELECTRICAL PANEL SHALL BE PERMANENTLY MARKED ON THE FLOOR AS "DEDICATED ELECTRICAL WORKING SPACE - KEEP CLEAR". ARCHITECT TO ENSURE EXISTING WALL WILL ALLOW CODE REQUIRED CLEARANCES PER NEC 110.26.

- TAGGED NOTES: (ELECTRICAL POWER PLANS)**
- FIELD VERIFY EQUIPMENT MOUNTING, NUMBER OF SWITCHES, AND SWITCH LOCATION.

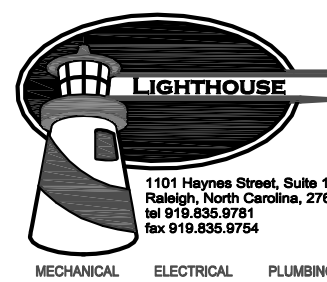
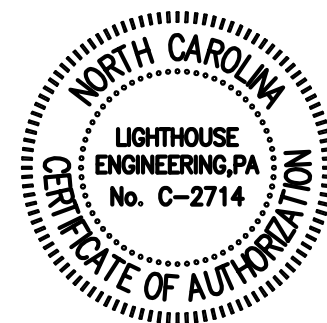
- ELECTRICAL GENERAL NOTES: (PREP / KITCHEN / BAR AREAS)**
- E.C. TO MAKE ALL FINAL CONNECTIONS TO KITCHEN AND DINING EQUIPMENT FROM POWER SOURCE TO THE EQUIPMENT. CONNECTIONS TO BE VERIFIED BY EQUIPMENT SUPPLIER. ALL CONTROL WIRING, INTERNAL WIRING OR REFRIGERANT LINES, ETC. SHALL BE BY EQUIPMENT SUPPLIER. EQUIPMENT SUPPLIER SHALL PROVIDE AN EQUIPMENT START-UP AFTER ALL EQUIPMENT IS CONNECTED AND A COMPLETELY OPERATIONAL SYSTEM SHALL BE PROVIDED.
 - COORDINATE EXACT EQUIPMENT CONNECTION AND MOUNTING REQUIREMENTS WITH EQUIPMENT PURCHASER FOR INSTALLATION. E.C. SHALL COORDINATE MOUNTING HEIGHTS OF ELECTRICAL DEVICES PRIOR TO ROUGH-IN.
 - CONNECT FIRE SUPPRESSION SYSTEM TO SHUNT TRIP BREAKERS AND GAS SOLENOID VALVE(S) VIA FIRE ALARM SYSTEM TO REMOVE POWER FROM EQUIPMENT WHEN FIRE SUPPRESSION SYSTEM IS ACTIVATED.

- GENERAL NOTES: (ELECTRICAL POWER PLANS)**
- EXISTING DEVICES ARE SHOWN FAINT. NEW AND/OR RELOCATED DEVICES ARE SHOWN **BOLD**. FIELD VERIFY EXACT LOCATION OF ALL DEVICES PRIOR TO STARTING WORK. EXISTING DEVICES SHALL REMAIN, UNLESS OTHERWISE NOTED.
E - EXISTING DEVICE TO REMAIN.
R - RELOCATE EXISTING FIXTURE OR DEVICE AND ALL ASSOCIATED CIRCUIT WIRING, SWITCHES, ETC. TO NEW LOCATION AS SHOWN.
REM - REMOVE EXISTING DEVICE AND ALL ASSOCIATED WIRING, SWITCHES, ETC.
 - EXISTING INFORMATION WAS OBTAINED FROM SITE VISIT DATED 02-20-24. E.C. SHALL VERIFY ALL FIELD CONDITIONS PRIOR TO BEGINNING WORK.

- GENERAL NOTES: (ELECTRICAL POWER PLANS)**
- RECEPTACLE LOCATIONS (AND MOUNTING HEIGHTS) SHALL BE COORDINATED WITH ARCHITECT AND OWNER PRIOR TO INSTALLATION. GENERAL USE RECEPTACLES SHALL BE CONFIRMED WITH OWNER VIA "BOX-WALK" PRIOR TO ROUGH-IN.
 - COORDINATE EXACT EQUIPMENT CONNECTION AND MOUNTING REQUIREMENTS WITH EQUIPMENT PURCHASER FOR INSTALLATION. E.C. SHALL COORDINATE MOUNTING HEIGHTS OF ELECTRICAL DEVICES PRIOR TO ROUGH-IN.
 - E.C. SHALL PROVIDE CONDUIT, J-BOXES AND STUB-IN'S FOR ALL DATA LINES TO AND FROM COMPUTERS, P.O.S. SYSTEM AND PRINTERS. PLEASE VERIFY ELECTRICAL REQUIREMENTS FROM P.O.S. PROVIDER.

- GENERAL NOTES: (ELECTRICAL POWER PLANS)**
- COORDINATE SERVICE DOORBELL LOCATION(S), IF REQUIRED, WITH OWNER PRIOR TO ROUGH-IN.
 - CONFIRM A SERVICE RECEPTACLE IS WITHIN 25'-0" OF ALL HVAC EQUIPMENT. PROVIDE MOUNTING POLES FOR RECEPTACLES AS NEEDED. PROVIDE ADDITIONAL DEVICES AS REQUIRED.

2/21/24 10:20:01 Electrical Power Plan - 1st Floor.dwg
Feb 24, 2025 - 11:43am



mon(arc) studio

701 W Trinity Ave #117
Durham, NC 27701

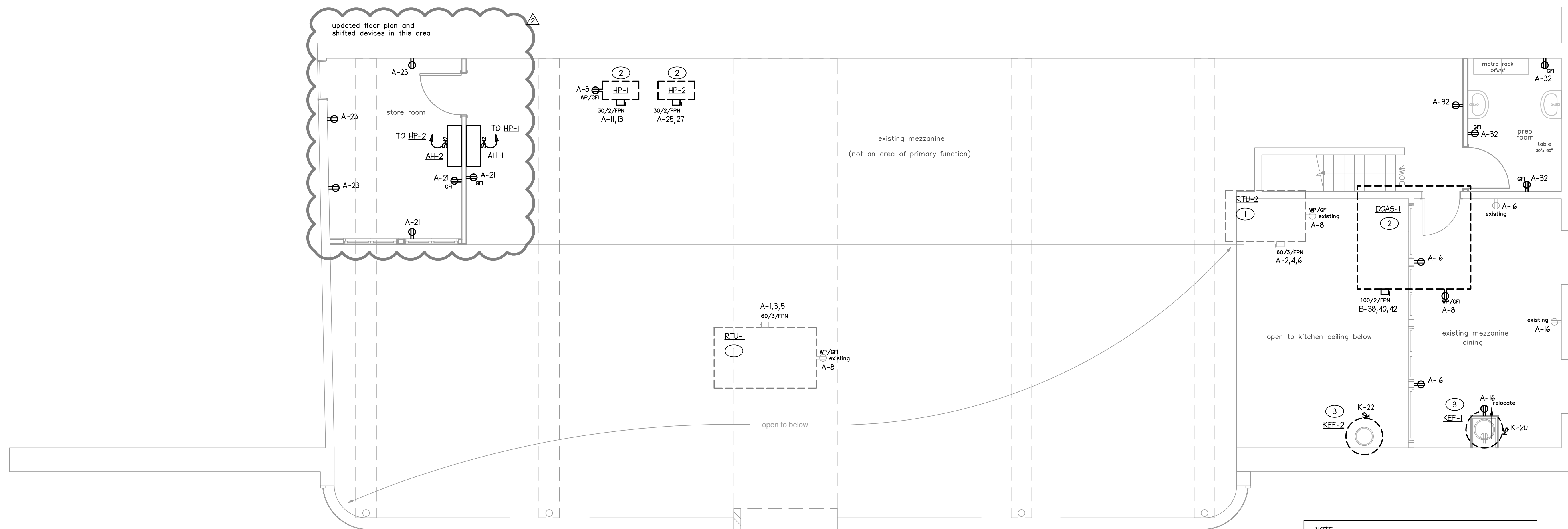
for permit 10/11/24

ifc 02/21/2025

Hutchins Showroom
a restaurant upfit
408 W Geer St.
Durham, NC 27701

Electrical Power
Plan - 2nd Floor

E202



1 ELECTRICAL LIGHTING -
2ND FLOOR PLAN
1/4" = 1'-0"

TAGGED NOTES: (ELECTRICAL POWER PLANS)

- 1 EXISTING MECHANICAL EQUIPMENT ON ROOF ABOVE. EXACT LOCATIONS TO BE FIELD VERIFIED.
- 2 NEW MECHANICAL EQUIPMENT ON ROOF ABOVE. COORDINATE EXACT LOCATIONS IN FIELD WITH EXISTING EQUIPMENT.
- 3 KITCHEN HOOD EXHAUST FAN ON ROOF ABOVE.

ELECTRICAL GENERAL NOTES: (PREP / KITCHEN / BAR AREAS)

- 1. E.C. TO MAKE ALL FINAL CONNECTIONS TO KITCHEN AND DINING EQUIPMENT FROM POWER SOURCE TO THE EQUIPMENT. CONNECTIONS TO BE VERIFIED BY EQUIPMENT SUPPLIER. ALL CONTROL WIRING, INTERNAL WIRING OR REFRIGERANT LINES, ETC. SHALL BE BY EQUIPMENT SUPPLIER. EQUIPMENT SUPPLIER SHALL PROVIDE AN EQUIPMENT START-UP AFTER ALL EQUIPMENT IS CONNECTED AND A COMPLETELY OPERATIONAL SYSTEM SHALL BE PROVIDED.
- 2. COORDINATE EXACT EQUIPMENT CONNECTION AND MOUNTING REQUIREMENTS WITH EQUIPMENT PURCHASED FOR INSTALLATION. E.C. SHALL COORDINATE MOUNTING HEIGHTS OF ELECTRICAL DEVICES PRIOR TO ROUGH-IN.
- 3. CONNECT FIRE SUPPRESSION SYSTEM TO SHUNT TRIP BREAKERS AND GAS SOLENOID VALVE(S) VIA FIRE ALARM SYSTEM TO REMOVE POWER FROM EQUIPMENT WHEN FIRE SUPPRESSION SYSTEM IS ACTIVATED.

GENERAL NOTES: (ELECTRICAL POWER PLANS)

- 1. EXISTING DEVICES ARE SHOWN FAINT. NEW AND/OR RELOCATED DEVICES ARE SHOWN **BOLD**. FIELD VERIFY EXACT LOCATION OF ALL DEVICES PRIOR TO STARTING WORK. EXISTING DEVICES SHALL REMAIN, UNLESS OTHERWISE NOTED.
E - EXISTING DEVICE TO REMAIN.
R - RELOCATE EXISTING FIXTURE OR DEVICE AND ALL ASSOCIATED CIRCUIT WIRING, SWITCHES, ETC. TO NEW LOCATION AS SHOWN.
REM - REMOVE EXISTING DEVICE AND ALL ASSOCIATED WIRING, SWITCHES, ETC.
- 2. EXISTING INFORMATION WAS OBTAINED FROM SITE VISIT DATED 02-20-24. E.C. SHALL VERIFY ALL FIELD CONDITIONS PRIOR TO BEGINNING WORK.

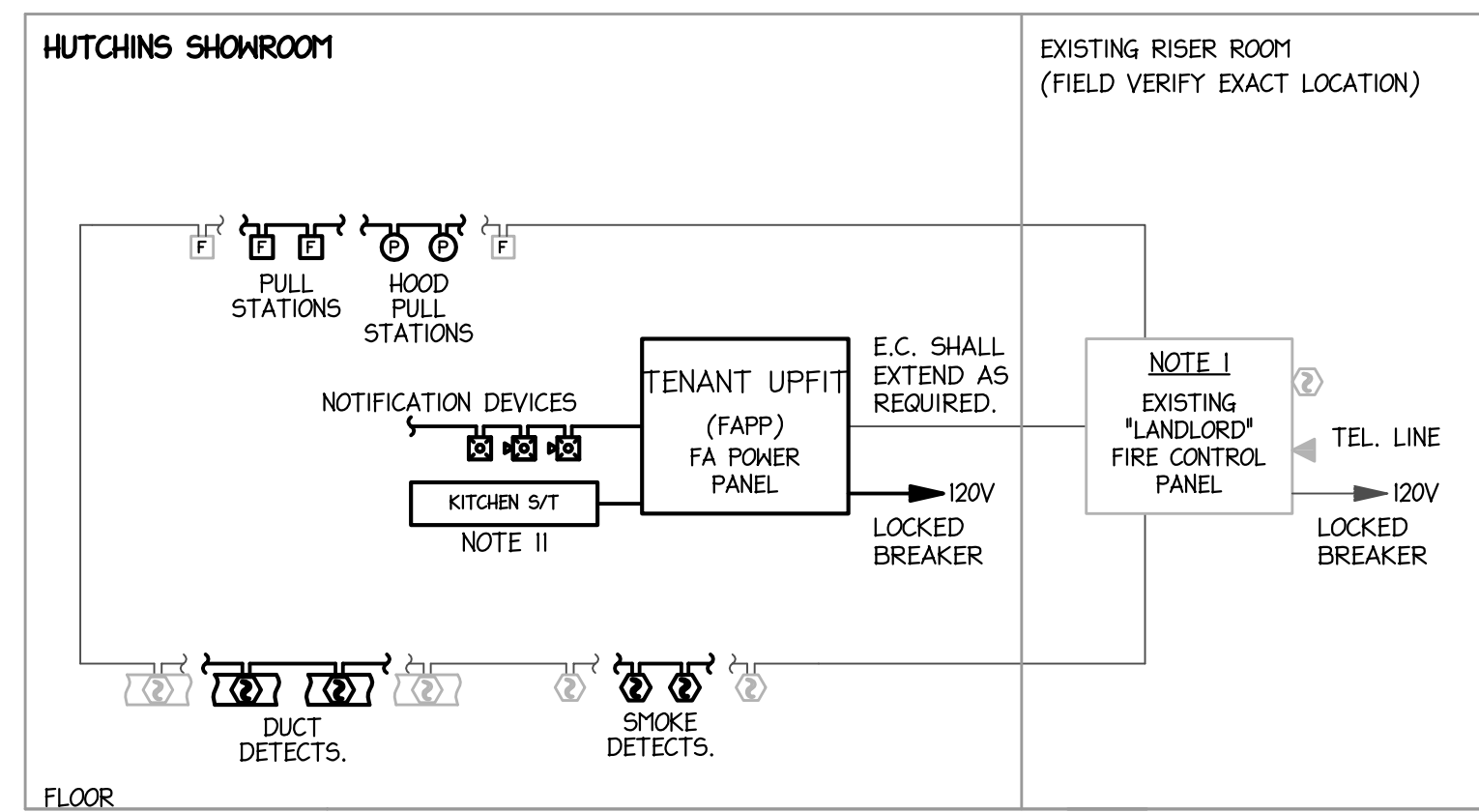
GENERAL NOTES: (ELECTRICAL POWER PLANS)

- 4. RECEPTACLE LOCATIONS (AND MOUNTING HEIGHTS) SHALL BE COORDINATED WITH ARCHITECT AND OWNER PRIOR TO INSTALLATION. GENERAL USE RECEPTACLES SHALL BE CONFIRMED WITH OWNER VIA "BOX-WALK" PRIOR TO ROUGH-IN.
- 5. COORDINATE EXACT EQUIPMENT CONNECTION AND MOUNTING REQUIREMENTS WITH EQUIPMENT PURCHASED FOR INSTALLATION. E.C. SHALL COORDINATE MOUNTING HEIGHTS OF ELECTRICAL DEVICES PRIOR TO ROUGH-IN.
- 6. E.C. SHALL PROVIDE CONDUIT, J-BOXES AND STUB-INS FOR ALL DATA LINES TO AND FROM COMPUTERS, P.O.S. SYSTEM AND PRINTERS. PLEASE VERIFY ELECTRICAL REQUIREMENTS FROM P.O.S. PROVIDER.

GENERAL NOTES: (ELECTRICAL POWER PLANS)

- 7. COORDINATE SERVICE DOORBELL LOCATION(S), IF REQUIRED, WITH OWNER PRIOR TO ROUGH-IN.
- 8. CONFIRM A SERVICE RECEPTACLE IS WITHIN 26'-0" OF ALL HVAC EQUIPMENT. PROVIDE MOUNTING POLES FOR RECEPTACLES AS NEEDED. PROVIDE ADDITIONAL DEVICES AS REQUIRED.

FIRE ALARM SYSTEM SCHEDULE		RESPONSE							
		ALL AUDIBLE SIGNAL SOUND	ALL VISUAL SIGNALS FLASH	SEND ALARM TO CENTRAL MONITORING STATION	SEND TROUBLE SIGNAL TO CENTRAL MONITORING STATION	SEND TROUBLE SIGNAL TO CENTRAL MONITORING STATION	ACTIVATE ASSOCIATED HVAC SHUTDOWN	ACTIVATE FIRE SMOKE DAMPER(S) ON RESPECTIVE SYSTEM	TRIP KITCHEN SHUNT TRIP BREAKER
ALARM									
1	GENERAL ALARM (ANY INPUT DEVICE IN ALARM, SD, P5)	X	X	X					
2	HOOD PULL STATION ALARM	X	X	X					
3	FLOW SWITCH SIGNAL (EXISTING BY LANDLORD)	X	X	X					
4	TAMPER SWITCH SIGNAL (EXISTING BY LANDLORD)				X				
5	DUCT DETECTORS THROUGHOUT BUILDING					X	X		
6	SPRINKLER RISER ROOM TEMPERATURE MONITOR (EXISTING BY LANDLORD)				X				
7	FAPP POWER LOSS OR FAULT CONDITION						X		
8	TROUBLE SIGNAL THROUGHOUT BUILDING				X				



3 PARTIAL FIRE ALARM RISER DIAGRAM
NO SCALE

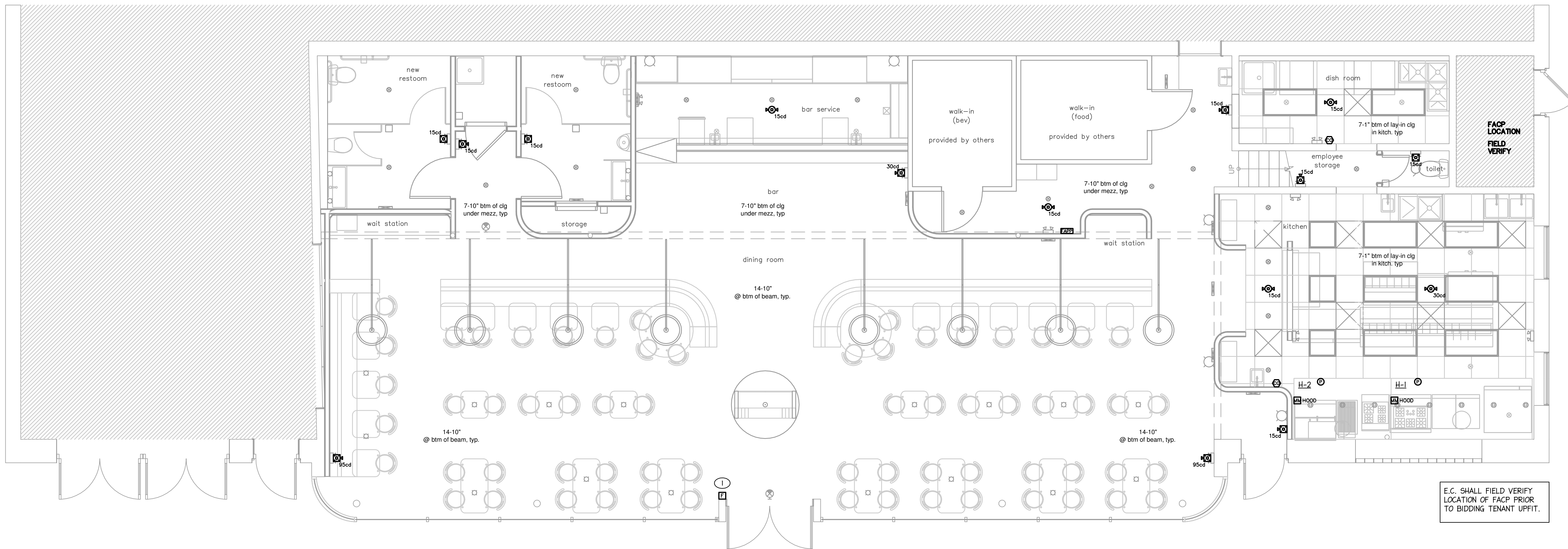
ABBREVIATIONS	
FACP	FIRE ALARM CONTROL PANEL.
FCC	FIRE COMMAND CENTER
FSEC	FOOD SERVICE EQUIPMENT CONTRACTOR.

ALL FA NOTIFICATION DEVICES ARE MOUNTED LESS THAN 10'-0" A.F.F.

FIRE ALARM RISER DIAGRAM NOTES:

1. FIRE ALARM CONTROL PANEL (BY LANDLORD) IS EXISTING: ADDRESSABLE, 24V DC, POWER LIMITED, FULLY SUPERVISED, WITH 24 HOUR STANDBY BATTERY.
2. FIRE ALARM DEVICES ARE TO BE INSTALLED IN ACCORDANCE WITH NFPA 72 AND 'ADA'.
3. ALL FIRE ALARM WIRING SHALL BE IN CONDUIT OR SHALL BE FIRE ALARM LISTED CABLE. PAINT CONDUIT (COLOR SELECTED BY ARCHITECT) WHERE VISIBLE TO PATRONS.
4. DEVICE QUANTITIES SHALL BE AS INDICATED ON THE PLANS. VERIFY QUANTITY AND EXACT LOCATION WITH AUTHORITY HAVING JURISDICTION TO ENSURE BID INCLUDES ALL REQUIRED WORK.
5. ELECTRICAL CONTRACTOR SHALL PROVIDE A FIRE ALARM LAYOUT PLAN AT THE FACP.
6. TESTING OF THE FIRE ALARM SYSTEM SHALL BE THE RESPONSIBILITY OF THE ELECTRICAL CONTRACTOR.
7. ALL VISUAL DEVICES IN A COMMON VIEWING AREA SHALL BE SYNCHRONIZED.
8. ALL NEW DEVICES SHALL BE BY THE SAME MANUFACTURER AS THE EXISTING SYSTEM AND SHALL BE FULLY COMPATIBLE.
9. THE SYSTEM MANUFACTURER SHALL PROVIDE BATTERY AND CIRCUIT LOAD CALCULATIONS BASED UPON THE ACTUAL DEVICES SUPPLIED.
10. ALL NOTIFICATION APPLIANCES WITH AUDIBLE NOTIFICATION CAPABILITIES SHALL EMIT A THREE-PULSE TEMPORAL PATTERN TONE COMPLIANT WITH ANSI S3.41.
11. PROVIDE SIGNAL (DRY CONTACT CLOSURE N.O. OR N.C.) TO ANY AUDIO / ENTERTAINMENT FOR REQUIRED SHUT DOWN OF AMPLIFIED ENTERTAINMENT.
12. WHERE INDICATED, MANUAL PULL STATIONS SHALL BE INSTALLED WITH TAMPER PROOF COVER WHICH SOUNDS A LOCAL ALARM WHEN OPENED.

FIRE ALARM SYMBOL LEGEND	
FA10	FIRE ALARM CONTROL PANEL, SURFACE MOUNTED.
FA20	FIRE ALARM SYSTEM POWER PANEL, 48" A.F.F.; VERIFY LOCATION.
FA30	FIRE ALARM SYSTEM MANUAL PULL STATION, 48" A.F.F.
FA40	FIRE ALARM SYSTEM ALARM INDICATING DEVICE, HORN/STROBE, 80" A.F.F.
FA50	FIRE ALARM SYSTEM ALARM INDICATING DEVICE, HORN/STROBE, CEILING OR PENDANT MOUNTED.
FA60	FIRE ALARM SYSTEM ALARM INDICATING DEVICE, STROBE, 80" A.F.F.
FA70	FIRE ALARM SYSTEM ALARM INDICATING DEVICE, SPEAKER, CEILING MOUNTED.
FA80	FIRE ALARM SYSTEM CEILING MOUNTED SMOKE DETECTOR, MULTI-MODE TYPE.
FA90	FIRE ALARM SYSTEM DUCT MOUNTED SMOKE DETECTOR. DETECTOR SHALL BE SUPPLIED AND WIRED BY E.C., INSTALLED BY M.C.
FA100	DEVICE MONITORING POINT. PROVIDE ALL REQUIRED HARDWARE TO FACILITATE MONITORING OF DEVICE INDICATED.
FA110	EXHAUST HOOD MANUAL PULLSTATION, TO BE LOCATED BY FSEC.
FA120	120V CARBON MONOXIDE DETECTOR WITH BATTERY BACK-UP, CONNECT TO NEAREST 120V CIRCUIT, UON AND INSTALL PER MANUFACTURERS RECOMMENDATIONS.



1 FIRE ALARM - 1ST FLOOR PLAN
1/4" = 1'-0"

GENERAL NOTES: (FIRE ALARM PLANS)

1. EXISTING DEVICES ARE SHOWN FAINT. NEW AND/OR RELOCATED DEVICES ARE SHOWN BOLD. FIELD VERIFY EXACT LOCATION OF ALL DEVICES PRIOR TO STARTING WORK. EXISTING DEVICES SHALL REMAIN, UNLESS OTHERWISE NOTED.
E - EXISTING DEVICE TO REMAIN.
R - RELOCATE EXISTING FIXTURE OR DEVICE AND ALL ASSOCIATED CIRCUIT WIRING, SWITCHES, ETC. TO NEW LOCATION AS SHOWN.
RDM - REMOVE EXISTING DEVICE AND ALL ASSOCIATED WIRING, SWITCHES, ETC.
2. EXISTING INFORMATION WAS OBTAINED FROM SITE VISIT DATED 02-20-24. E.C. SHALL VERIFY ALL FIELD CONDITIONS PRIOR TO BEGINNING WORK.

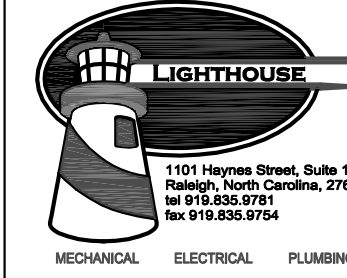
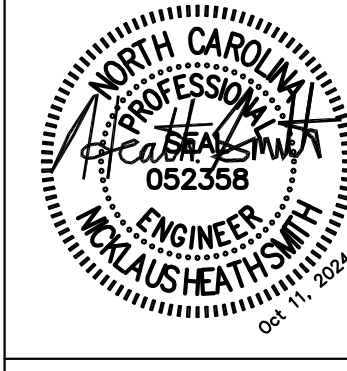
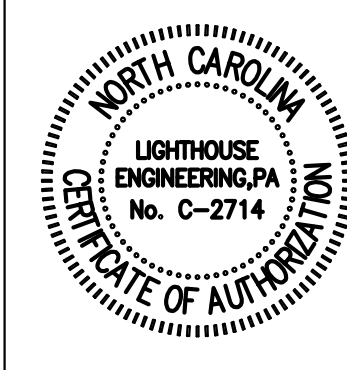
SEE ARCHITECTURAL PLANS (BY OTHERS) FOR FURTHER INFORMATION ON PROJECT SCOPE.

GENERAL NOTES: (FIRE ALARM PLANS)

3. COORDINATE ALL DEVICE LOCATIONS (INCLUDING CEILING DEVICES) WITH OTHER TRADES TO AVOID CONFLICTS.
4. E.C. SHALL COORDINATE THE REUSE OF ANY EXISTING ITEMS WITH OWNER PRIOR TO BEGINNING WORK. E.C. SHALL PROVIDE A DEDUCT FOR REUSE OF ANY ITEMS THAT ARE NOT CURRENTLY SHOWN TO BE REUSED.
5. EXISTING DEVICES ARE TO BE REVIEWED FOR COMPLIANCE AND OPERATION. CONTRACTOR TO CONFIRM CODE REQUIRED COVERAGE FROM EXISTING DEVICES HAS BEEN PROVIDED; PROVIDE NEW DEVICES AS REQUIRED.

TAGGED NOTES: (FIRE ALARM PLAN)

1. COORDINATE MOUNTING & LOCATION WITH ARCHITECT AND STOREFRONT.



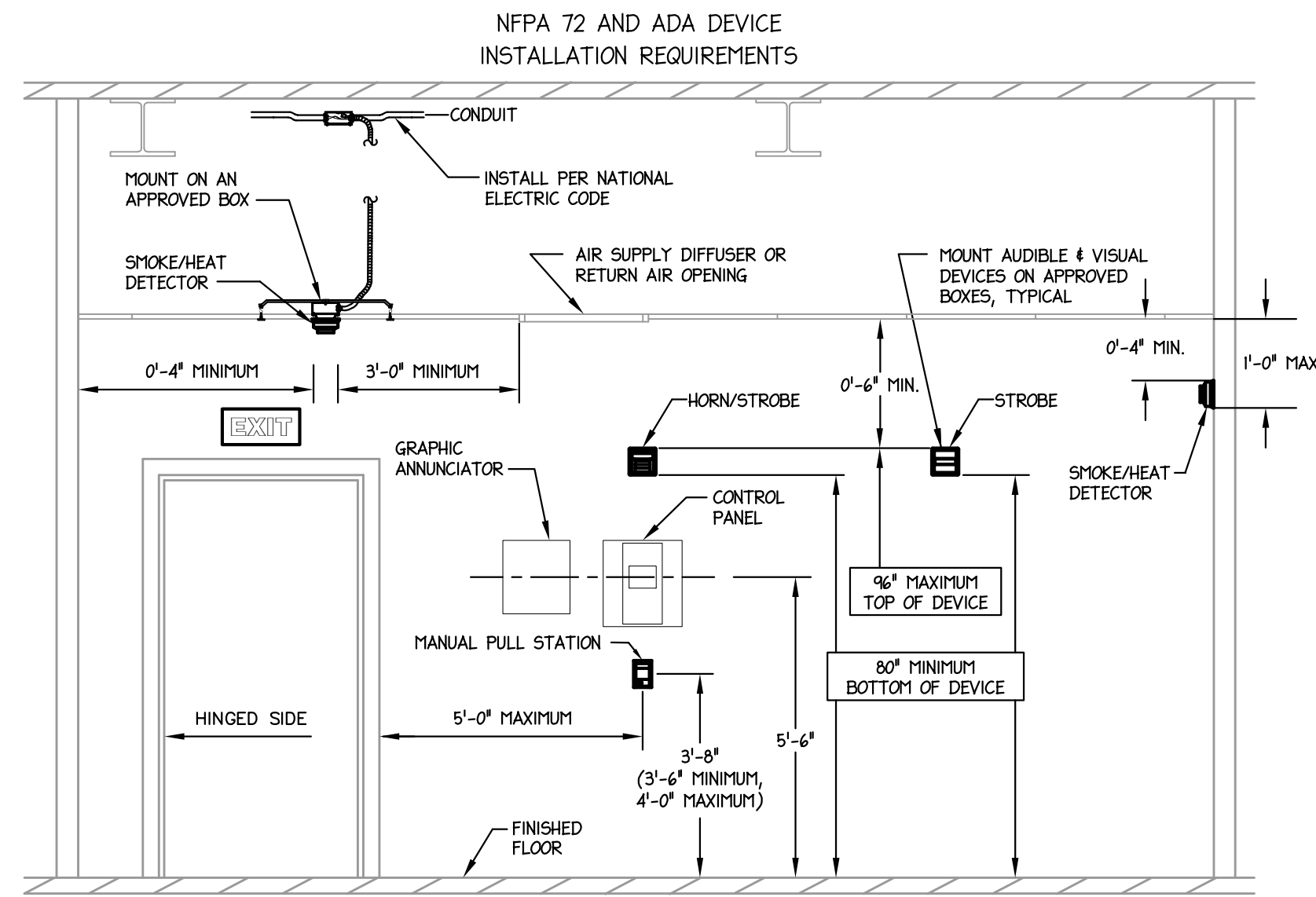
mon(arc) studio
701 W Trinity Ave #117
Durham, NC 27701

for permit 10/11/24

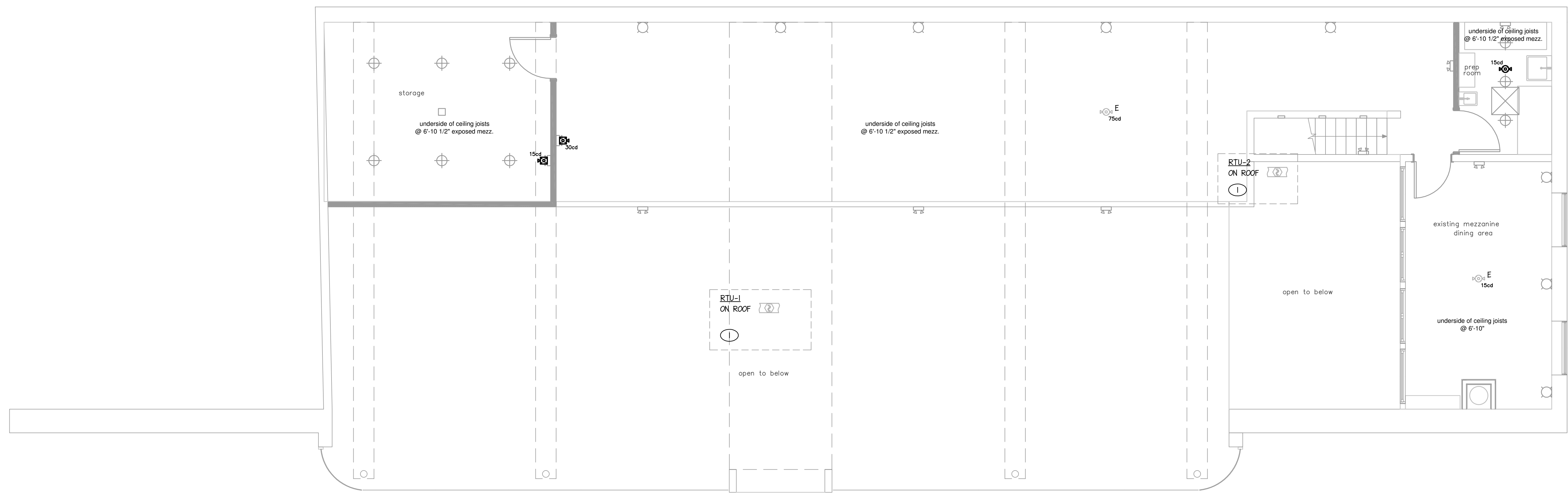
Hutchins Showroom
a restaurant upfit
408 W Geer St.
Durham, NC 27701

Fire Alarm Plan - 1st Floor

FA101



2 ADA DEVICE INSTALLATION
DIAGRAMMATIC ONLY



1 FIRE ALARM - 2ND FLOOR PLAN
1/4" = 1'-0"

GENERAL NOTES: (FIRE ALARM PLANS)

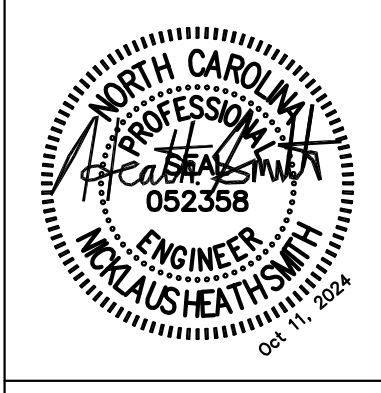
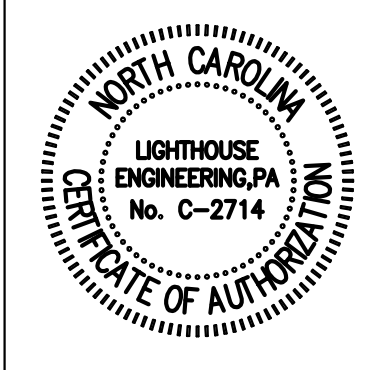
- EXISTING DEVICES ARE SHOWN FAINT. NEW AND/OR RELOCATED DEVICES ARE SHOWN **BOLD**. FIELD VERIFY EXACT LOCATION OF ALL DEVICES PRIOR TO STARTING WORK. EXISTING DEVICES SHALL REMAIN, UNLESS OTHERWISE NOTED.
E - EXISTING DEVICE TO REMAIN.
R - RELOCATE EXISTING FIXTURE OR DEVICE AND ALL ASSOCIATED CIRCUIT WIRING, SWITCHES, ETC. TO NEW LOCATION AS SHOWN.
REM - REMOVE EXISTING DEVICE AND ALL ASSOCIATED WIRING, SWITCHES, ETC.
- EXISTING INFORMATION WAS OBTAINED FROM SITE VISIT DATED 02-20-24. E.C. SHALL VERIFY ALL FIELD CONDITIONS PRIOR TO BEGINNING WORK.

GENERAL NOTES: (FIRE ALARM PLANS)

- COORDINATE ALL DEVICE LOCATIONS (INCLUDING CEILING DEVICES) WITH OTHER TRADES TO AVOID CONFLICTS.
- E.C. SHALL COORDINATE THE REUSE OF ANY EXISTING ITEMS WITH OWNER PRIOR TO BEGINNING WORK. E.C. SHALL PROVIDE A DEDUCT FOR REUSE OF ANY ITEMS THAT ARE NOT CURRENTLY SHOWN TO BE REUSED.
- EXISTING DEVICES ARE TO BE REVIEWED FOR COMPLIANCE AND OPERATION. CONTRACTOR TO CONFIRM CODE REQUIRED COVERAGE FROM EXISTING DEVICES HAS BEEN PROVIDED; PROVIDE NEW DEVICES AS REQUIRED.

TAGGED NOTES: (FIRE ALARM PLANS)

- 1 ENSURE RTU HAS AN EXISTING DUCT SMOKE DETECTOR; INSTALL NEW DETECTOR IF ABSENT.



mon(arc) studio
701 W Trinity Ave #117
Durham, NC 27701

for permit 10/11/24

Hutchins Showroom
a restaurant upfit
408 W Geer St.
Durham, NC 27701

Fire Alarm Plan - 2nd Floor

FA102